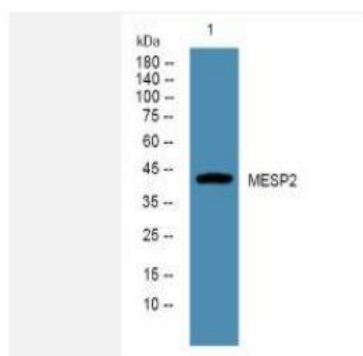


## MESP2 Polyclonal Antibody

<b>Catalog No.</b>	IPB8024
<b>Reactivity</b>	Human; Mouse; Rat
<b>Applications</b>	WB; ELISA
<b>Dilution</b>	WB: 1:500-2000    ELISA: 1:5000-20000
<b>Gene Name</b>	MESP2 BHLHC6 SCDO2
<b>Protein Name</b>	Mesoderm posterior protein 2 (Class C basic helix-loop-helix protein 6) (bHLHc6)
<b>Human Gene Id</b>	145873
<b>Swiss-Prot</b>	Q0VG99
<b>Formulation</b>	Liquid in PBS containing 50% glycerol, and 002% sodium azide
<b>Source</b>	Rabbit
<b>Purification</b>	The antibody was affinity-purified from rabbit antiserum by affinity-chromatography using epitope-specific immunogen
<b>Concentration</b>	1 mg/ml
<b>Storage&amp;Stability</b>	-20°C/1 year
<b>Subcellular Location</b>	Nucleus
<b>MW</b>	-
<b>Background</b>	This gene encodes a member of the bHLH family of transcription factors and plays a key role in defining the rostrocaudal patterning of somites via interactions with multiple Notch signaling pathways This gene is expressed in the anterior presomitic mesoderm and is downregulated immediately after the formation of segmented somites This gene also plays a role in the formation of epithelial somitic mesoderm and cardiac mesoderm Mutations in the MESP2 gene cause autosomal recessive spondylocostal dystosis 2 (SCD02)

### Products Images:



Western blot analysis of lysates from A431 cells, primary antibody was diluted at 1:1000, 4° over night