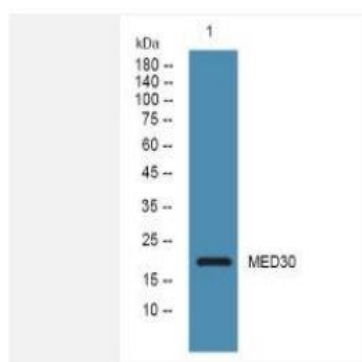


MED30 Polyclonal Antibody

Catalog No.	IPB8015
Reactivity	Human; Mouse;
Applications	WB; ELISA
Dilution	WB: 1:500-2000 ELISA: 1:5000-20000
Gene Name	MED30 THRAP6 TRAP25
Protein Name	Mediator of RNA polymerase II transcription subunit 30 (Mediator complex subunit 30) (TRAP/Mediator complex component TRAP25) (Thyroid hormone receptor-associated protein 6) (Thyroid hormone receptor-associated protein complex 25 kDa component) (Trap25)
Human Gene Id	90390
Swiss-Prot	Q96HR3
Formulation	Liquid in PBS containing 50% glycerol, and 002% sodium azide
Source	Rabbit
Purification	The antibody was affinity-purified from rabbit antiserum by affinity-chromatography using epitope-specific immunogen
Concentration	1 mg/ml
Storage&Stability	-20°C/1 year
Subcellular Location	Nucleus
MW	-
Background	The multiprotein TRAP:Mediator complex facilitates gene expression through a wide variety of transcriptional activators MED30 is a component of this complex that appears to be metazoan specific

Products Images:



Western blot analysis of lysates from PC12 cells, primary antibody was diluted at 1:1000, 4°over night