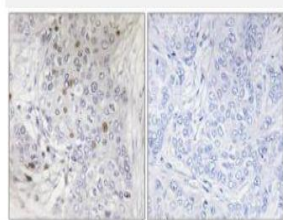


## MafF Polyclonal Antibody

<b>Catalog No.</b>	IPB4267
<b>Reactivity</b>	Human; Mouse;
<b>Applications</b>	IHC; ELISA
<b>Dilution</b>	IHC: 1:50-1:200    ELISA: 1:10000
<b>Gene Name</b>	MAFF
<b>Protein Name</b>	Transcription factor MafF
<b>Human Gene Id</b>	23764
<b>Swiss-Prot</b>	Q9ULX9
<b>Formulation</b>	Liquid in PBS containing 50% glycerol, 05% BSA and 002% sodium azide
<b>Source</b>	Rabbit
<b>Purification</b>	The antibody was affinity-purified from rabbit antiserum by affinity-chromatography using epitope-specific immunogen
<b>Concentration</b>	1 mg/ml
<b>Storage&amp;Stability</b>	-20°C/1 year
<b>Subcellular Location</b>	Nucleus
<b>MW</b>	17760
<b>Background</b>	The protein encoded by this gene is a type I membrane protein and member of the immunoglobulin superfamily. It is thought to be involved in the process of myelination. It is a lectin that binds to sialylated glycoconjugates and mediates certain myelin-neuron cell-cell interactions. Three alternatively spliced transcripts encoding different isoforms have been described for this gene.

### Products Images:



Immunohistochemistry analysis of paraffin-embedded human breast carcinoma tissue, using MAFF Antibody. The picture on the right is blocked with the synthesized peptide.