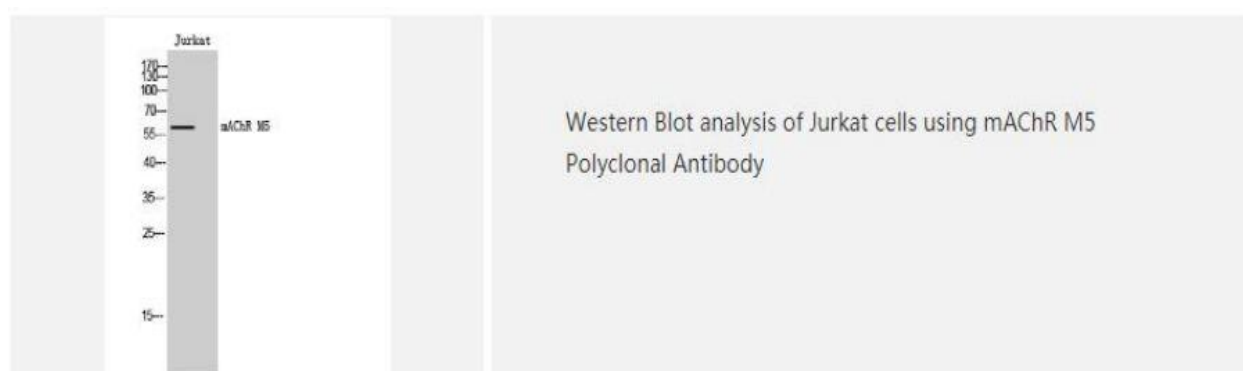
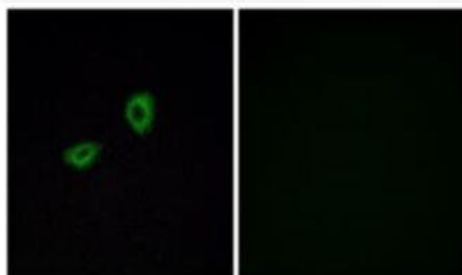


mAChR M5 Polyclonal Antibody

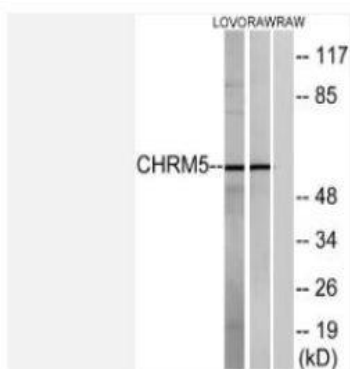
Catalog No.	IPB4258
Reactivity	Human; Mouse; Rat
Applications	WB; IF/ICC; ELISA
Dilution	WB: 1:500-1:2000 IF: 1:50-1:200 ELISA: 1:40000
Gene Name	CHRM5
Protein Name	Muscarinic acetylcholine receptor M5
Human Gene Id	1133
Swiss-Prot	P08912
Formulation	Liquid in PBS containing 50% glycerol, 05% BSA and 002% sodium azide
Source	Rabbit
Purification	The antibody was affinity-purified from rabbit antiserum by affinity-chromatography using epitope-specific immunogen
Concentration	1 mg/ml
Storage&Stability	-20°C/1 year
Subcellular Location	Cell membrane; Multi-pass membrane protein Cell junction, synapse, postsynaptic cell membrane; Multi-pass membrane protein
MW	60074
Background	Alpha-2-macroglobulin is a protease inhibitor and cytokine transporter It inhibits many proteases, including trypsin, thrombin and collagenase A2M is implicated in Alzheimer disease (AD) due to its ability to mediate the clearance and degradation of A-beta, the major component of beta-amyloid deposits

Products Images:





Immunofluorescence analysis of A549 cells, using CHRM5 Antibody. The picture on the right is blocked with the synthesized peptide.



Western blot analysis of lysates from LOVO and RAW264.7 cells, using CHRM5 Antibody. The lane on the right is blocked with the synthesized peptide.