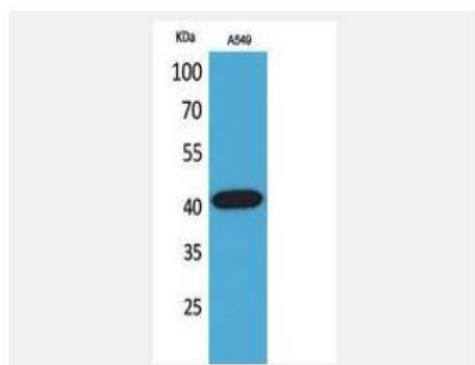


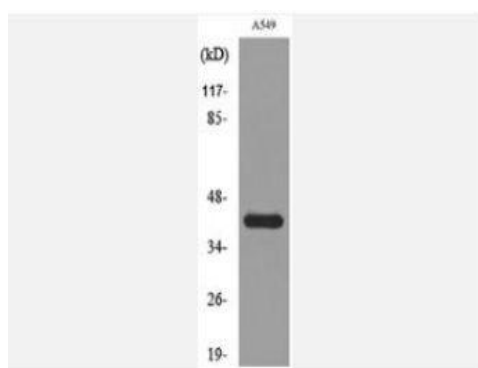
L-Selectin Polyclonal Antibody

| | |
|------------------------------|--|
| Catalog No. | IPB4229 |
| Reactivity | Human; Mouse; Rat |
| Applications | WB; ELISA |
| Dilution | WB: 1:500-1:2000 ELISA: 1:20000 |
| Gene Name | SELL |
| Protein Name | L-selectin |
| Human Gene Id | 6402 |
| Swiss-Prot | P14151 |
| Formulation | Liquid in PBS containing 50% glycerol, 05% BSA and 002% sodium azide |
| Source | Rabbit |
| Purification | The antibody was affinity-purified from rabbit antiserum by affinity-chromatography using epitope-specific immunogen |
| Concentration | 1 mg/ml |
| Storage&Stability | -20°C/1 year |
| Subcellular Location | Cell membrane; Single-pass type I membrane protein |
| MW | 42187 |
| Background | This gene encodes the receptor for both luteinizing hormone and choriogonadotropin This receptor belongs to the G-protein coupled receptor 1 family, and its activity is mediated by G proteins which activate adenylate cyclase Mutations in this gene result in disorders of male secondary sexual character development, including familial male precocious puberty, also known as testotoxicosis, hypogonadotropic hypogonadism, Leydig cell adenoma with precocious puberty, and male pseudohermaphroditism with Leydig cell hypoplasia |

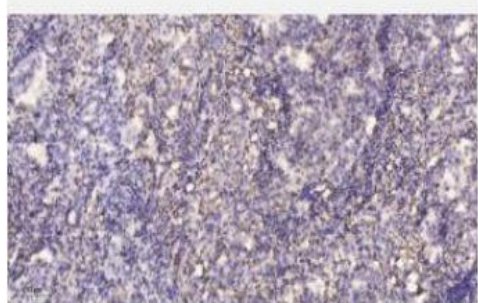
Products Images:



Western Blot analysis of A549 cells using L-Selectin Polyclonal Antibody. Secondary antibody(catalog#:RS0002) was diluted at 1:20000



Western blot analysis of lysate from A549 cells, using SELL Antibody.



Immunohistochemical analysis of paraffin-embedded human lung cancer. 1, Antibody was diluted at 1:200(4° overnight). 2, Tris-EDTA,pH9.0 was used for antigen retrieval. 3,Secondary antibody was diluted at 1:200(room temperature, 45min).