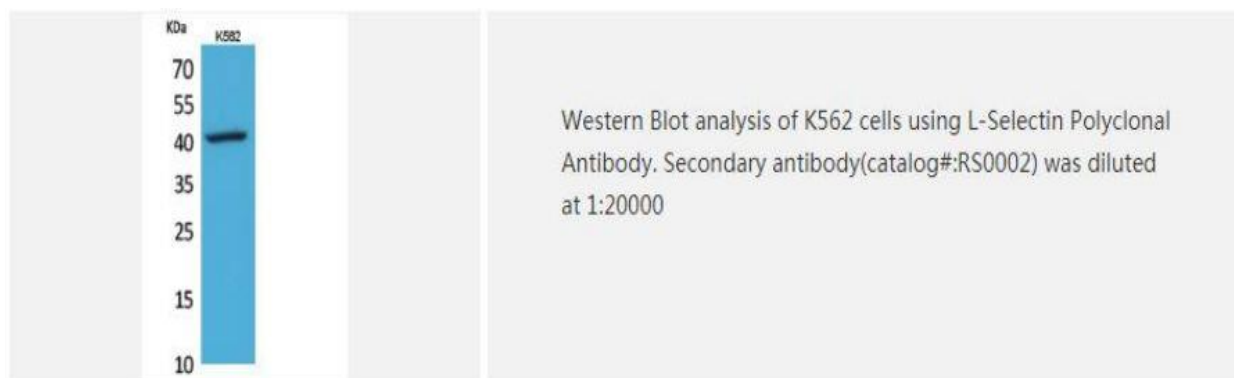
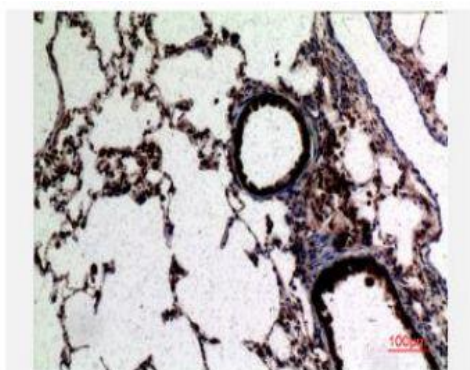


L-Selectin Polyclonal Antibody

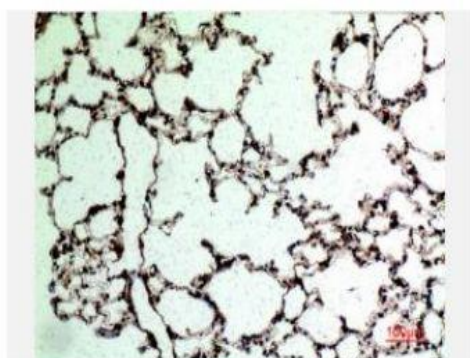
Catalog No.	IPB4228
Reactivity	Human; Mouse; Rat
Applications	WB; IHC; ELISA
Dilution	WB: 1:500-1:2000 IHC-p: 1:100-1:200 ELISA: 1:20000
Gene Name	SELL
Protein Name	L-selectin
Human Gene Id	6402
Swiss-Prot	P14151
Formulation	Liquid in PBS containing 50% glycerol, 05% BSA and 002% sodium azide
Source	Rabbit
Purification	The antibody was affinity-purified from rabbit antiserum by affinity-chromatography using epitope-specific immunogen
Concentration	1 mg/ml
Storage&Stability	-20°C/1 year
Subcellular Location	Cell membrane; Single-pass type I membrane protein
MW	42187
Background	This gene encodes a cell surface adhesion molecule that belongs to a family of adhesion:homing receptors The encoded protein contains a C-type lectin-like domain, a calcium-binding epidermal growth factor-like domain, and two short complement-like repeats The gene product is required for binding and subsequent rolling of leucocytes on endothelial cells, facilitating their migration into secondary lymphoid organs and inflammation sites Single-nucleotide polymorphisms in this gene have been associated with various diseases including immunoglobulin A nephropathy Alternatively spliced transcript variants have been found for this gene

Products Images:

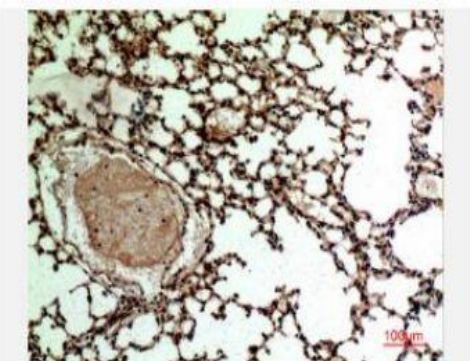




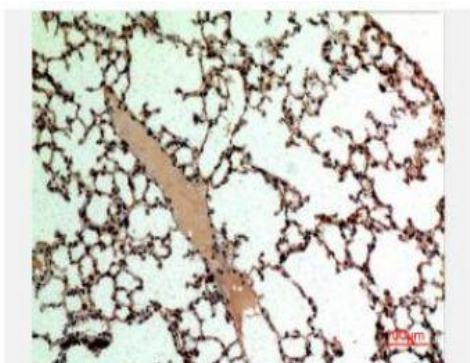
Immunohistochemical analysis of paraffin-embedded rat-lung, antibody was diluted at 1:100



Immunohistochemical analysis of paraffin-embedded rat-lung, antibody was diluted at 1:100



Immunohistochemical analysis of paraffin-embedded mouse-lung, antibody was diluted at 1:100



Immunohistochemical analysis of paraffin-embedded mouse-lung, antibody was diluted at 1:100