

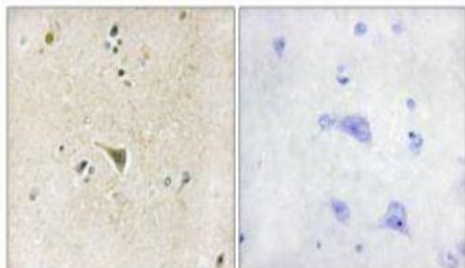
LRRK1 Polyclonal Antibody

Catalog No.	IPB4227
Reactivity	Human; Mouse; Rat
Applications	IHC; IF/ICC; ELISA
Dilution	IHC: 1:50-1:200 IF: 1:50-1:200 ELISA: 1:5000
Gene Name	LRRK1
Protein Name	Leucine-rich repeat serine/threonine-protein kinase 1
Human Gene Id	79705
Swiss-Prot	Q38SD2
Formulation	Liquid in PBS containing 50% glycerol, 05% BSA and 002% sodium azide
Source	Rabbit
Purification	The antibody was affinity-purified from rabbit antiserum by affinity-chromatography using epitope-specific immunogen
Concentration	1 mg/ml
Storage&Stability	-20°C/1 year
Subcellular Location	Cytoplasm
MW	227843
Background	This gene encodes a cell surface adhesion molecule that belongs to a family of adhesion:homing receptors The encoded protein contains a C-type lectin-like domain, a calcium-binding epidermal growth factor-like domain, and two short complement-like repeats The gene product is required for binding and subsequent rolling of leucocytes on endothelial cells, facilitating their migration into secondary lymphoid organs and inflammation sites Single-nucleotide polymorphisms in this gene have been associated with various diseases including immunoglobulin A nephropathy Alternatively spliced transcript variants have been found for this gene

Products Images:



Immunofluorescence analysis of HeLa cells, using LRRK1 Antibody. The picture on the right is blocked with the synthesized peptide.



Immunohistochemistry analysis of paraffin-embedded human brain tissue, using LRRK1 Antibody. The picture on the right is blocked with the synthesized peptide.