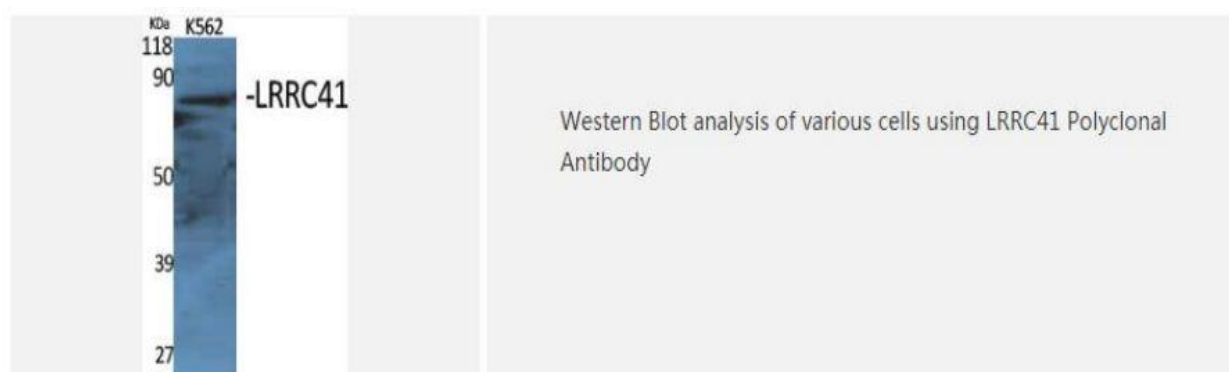
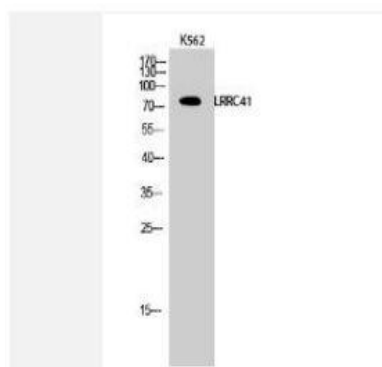


## LRRC41 Polyclonal Antibody

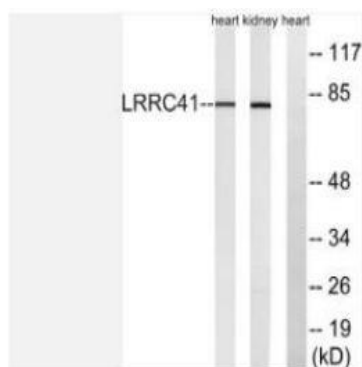
<b>Catalog No.</b>	IPB4226
<b>Reactivity</b>	Human; Mouse; Rat
<b>Applications</b>	WB; IHC; ELISA
<b>Dilution</b>	WB: 1:500-1:2000    IHC: 1:50-1:200    ELISA: 1:5000
<b>Gene Name</b>	LRRC41
<b>Protein Name</b>	Leucine-rich repeat-containing protein 41
<b>Human Gene Id</b>	10489
<b>Swiss-Prot</b>	Q15345
<b>Formulation</b>	Liquid in PBS containing 50% glycerol, 05% BSA and 002% sodium azide
<b>Source</b>	Rabbit
<b>Purification</b>	The antibody was affinity-purified from rabbit antiserum by affinity-chromatography using epitope-specific immunogen
<b>Concentration</b>	1 mg/ml
<b>Storage&amp;Stability</b>	-20°C/1 year
<b>Subcellular Location</b>	nucleus,cytoplasm,membrane,
<b>MW</b>	88650
<b>Background</b>	catalytic activity: ATP + a protein = ADP + a phosphoprotein,cofactor: Magnesium or manganese,enzyme regulation: Binding of GTP stimulates kinase activityPTM: Autophosphorylated,similarity: Belongs to the protein kinase superfamily TKL Ser:Thr protein kinase family ROCO subfamily,similarity: Contains 1 protein kinase domain,similarity: Contains 1 Roc domain,similarity: Contains 11 LRR (leucine-rich) repeats,similarity: Contains 4 ANK repeats

### Products Images:





Western Blot analysis of K562 cells using LRRC41 Polyclonal Antibody



Western blot analysis of lysates from rat kidney and rat heart cells, using LRRC41 Antibody. The lane on the right is blocked with the synthesized peptide.