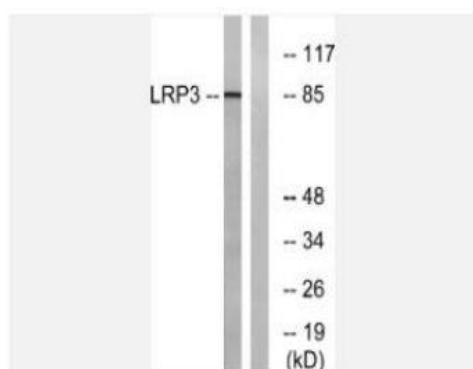


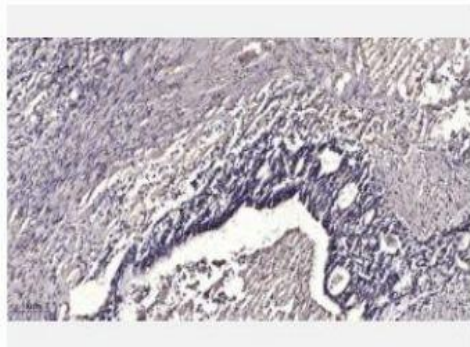
LRP3 Polyclonal Antibody

Catalog No.	IPB4225
Reactivity	Human; Mouse; Rat
Applications	WB; ELISA
Dilution	WB: 1:500-1:2000 ELISA: 1:40000
Gene Name	LRP3
Protein Name	Low-density lipoprotein receptor-related protein 3
Human Gene Id	4037
Swiss-Prot	O75074
Formulation	Liquid in PBS containing 50% glycerol, 05% BSA and 002% sodium azide
Source	Rabbit
Purification	The antibody was affinity-purified from rabbit antiserum by affinity-chromatography using epitope-specific immunogen
Concentration	1 mg/ml
Storage&Stability	-20°C/1 year
Subcellular Location	Membrane; Single-pass type I membrane protein Membrane, coated pit
MW	82884
Background	caution: It is uncertain whether Met-1 or Met-23 is the initiator,domain: The elongin BC complex binding domain is also known as BC-box with the consensus [APST]-L-x(3)-C-x(3)-[AILV],function: Probable substrate recognition component of an ECS (Elongin BC-CUL2:5-SOCS-box protein) E3 ubiquitin ligase complex which mediates the ubiquitination and subsequent proteasomal degradation of target proteins,pathway: Protein modification; protein ubiquitinationPTM: Phosphorylated upon DNA damage, probably by ATM or ATR,sequence caution: Translation N-terminally extended,similarity: Contains 7 LRR (leucine-rich) repeats,subunit: Part of an E3 ubiquitin-protein ligase complex with Elongin BC (TCEB1 and TCEB2), RBX1 and CUL5 Component of a probable ECS(LRRC41) complex which contains CUL5, RNF7:RBX2, Elongin BC and LRRC41 Interacts with CUL5, RNF7, TCEB1 and TCEB2

Products Images:



Western blot analysis of lysates from RAW264.7 cells, using LRP3 Antibody. The lane on the right is blocked with the synthesized peptide.



Immunohistochemical analysis of paraffin-embedded human Gastric adenocarcinoma. 1, Antibody was diluted at 1:200(4° overnight). 2, Tris-EDTA,pH9.0 was used for antigen retrieval. 3,Secondary antibody was diluted at 1:200(room temperature, 45min).