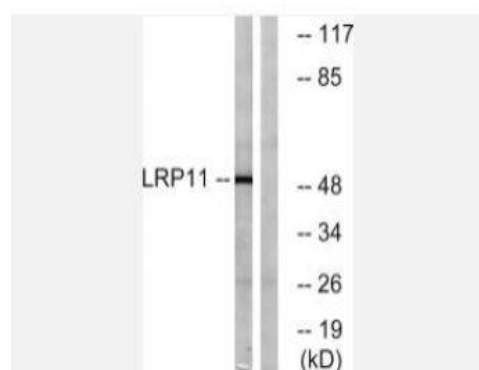


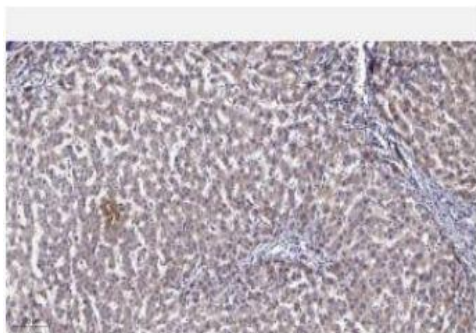
## LRP11 Polyclonal Antibody

<b>Catalog No.</b>	IPB4224
<b>Reactivity</b>	Human; Mouse; Rat
<b>Applications</b>	WB; ELISA
<b>Dilution</b>	WB: 1:500-1:2000    ELISA: 1:40000
<b>Gene Name</b>	LRP11
<b>Protein Name</b>	Low-density lipoprotein receptor-related protein 11
<b>Human Gene Id</b>	84918
<b>Swiss-Prot</b>	Q86VZ4
<b>Formulation</b>	Liquid in PBS containing 50% glycerol, 05% BSA and 002% sodium azide
<b>Source</b>	Rabbit
<b>Purification</b>	The antibody was affinity-purified from rabbit antiserum by affinity-chromatography using epitope-specific immunogen
<b>Concentration</b>	1 mg/ml
<b>Storage&amp;Stability</b>	-20°C/1 year
<b>Subcellular Location</b>	Membrane; Single-pass type I membrane protein
<b>MW</b>	53311
<b>Background</b>	function: Probable receptor, which may be involved in the internalization of lipophilic molecules and/or signal transduction Its precise role is however unclear, since it does not bind to very low density lipoprotein (VLDL) or to LRPAP1 in vitro,similarity: Belongs to the LDLR family,similarity: Contains 2 CUB domains,similarity: Contains 4 LDL-receptor class A domains,subunit : Binds GGA1 and GGA2,tissue specificity: Widely expressed Highly expressed in skeletal muscle and ovary Expressed at intermediate level in heart, brain, liver, pancreas, prostate and small intestine Weakly expressed in testis, colon and leukocyte

### Products Images:



Western blot analysis of lysates from Jurkat cells, using LRP11 Antibody. The lane on the right is blocked with the synthesized peptide.



Immunohistochemical analysis of paraffin-embedded human liver cancer. 1, Antibody was diluted at 1:200(4° overnight). 2, Tris-EDTA,pH9.0 was used for antigen retrieval. 3,Secondary antibody was diluted at 1:200(room temperature, 45min).