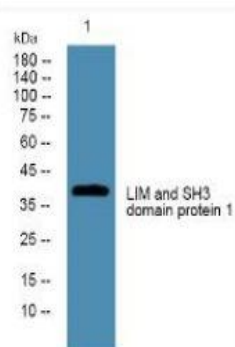


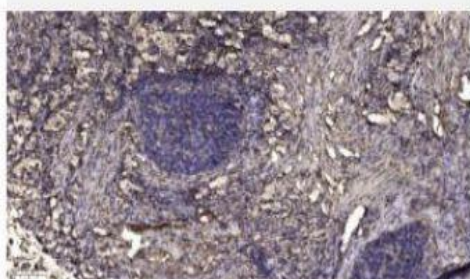
## LIM and SH3 domain protein 1 Polyclonal Antibody

<b>Catalog No.</b>	IPB4194
<b>Reactivity</b>	Human; Mouse; Rat
<b>Applications</b>	WB; ELISA
<b>Dilution</b>	WB: 1:500-2000    ELISA: 1:10000-20000
<b>Gene Name</b>	LASP1 MLN50
<b>Protein Name</b>	LIM and SH3 domain protein 1
<b>Human Gene Id</b>	3927
<b>Swiss-Prot</b>	Q14847
<b>Formulation</b>	Liquid in PBS containing 50% glycerol, 05% BSA and 002% sodium azide
<b>Source</b>	Rabbit
<b>Purification</b>	The antibody was affinity-purified from rabbit antiserum by affinity-chromatography using epitope-specific immunogen
<b>Concentration</b>	1 mg/ml
<b>Storage&amp;Stability</b>	-20°C/1 year
<b>Subcellular Location</b>	Cytoplasm, cell cortex Cytoplasm, cytoskeleton Associated with the F-actin rich cortical cytoskeleton
<b>MW</b>	-
<b>Background</b>	<p>There are approximately 40 known eukaryotic LIM proteins, so named for the LIM domains they contain LIM domains are highly conserved cysteine-rich structures containing 2 zinc fingers Although zinc fingers usually function by binding to DNA or RNA, the LIM motif probably mediates protein-protein interactions LIM kinase-1 and LIM kinase-2 belong to a small subfamily with a unique combination of 2 N-terminal LIM motifs and a C-terminal protein kinase domain LIMK1 is a serine:threonine kinase that regulates actin polymerization via phosphorylation and inactivation of the actin binding factor cofilin This protein is ubiquitously expressed during development and plays a role in many cellular processes associated with cytoskeletal structure This protein also stimulates axon growth and may play a role in brain development LIMK1 hemizygosity is implicated in the impaired visuospatial constructive cog</p>

### Products Images:



Western blot analysis of lysates from U2OS cells, primary antibody was diluted at 1:1000, 4° over night



Immunohistochemical analysis of paraffin-embedded human Squamous cell carcinoma of lung. 1, Antibody was diluted at 1:200(4° overnight). 2, Tris-EDTA,pH9.0 was used for antigen retrieval. 3,Secondary antibody was diluted at 1:200(room temperature, 45min).