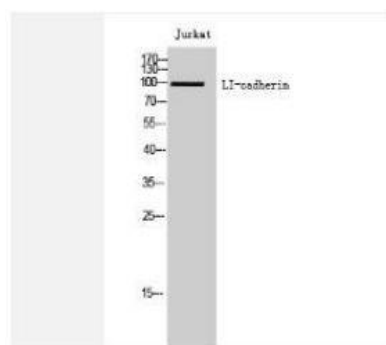


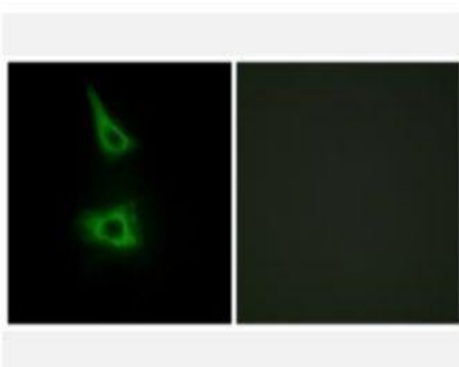
LI-cadherin Polyclonal Antibody

Catalog No.	IPB4190
Reactivity	Human; Mouse; Rat
Applications	WB; IHC; IF/ICC; ELISA
Dilution	WB: 1:500-1:2000 IHC: 1:50-1:200 IF: 1:50-1:200 ELISA: 1:40000
Gene Name	CDH17
Protein Name	Cadherin-17
Human Gene Id	1015
Swiss-Prot	Q12864
Formulation	Liquid in PBS containing 50% glycerol, 05% BSA and 002% sodium azide
Source	Rabbit
Purification	The antibody was affinity-purified from rabbit antiserum by affinity-chromatography using epitope-specific immunogen
Concentration	1 mg/ml
Storage&Stability	-20°C/1 year
Subcellular Location	Cell membrane; Single-pass type I membrane protein
MW	92205
Background	The protein encoded by this gene is a pleiotropic cytokine with roles in several different systems. It is involved in the induction of hematopoietic differentiation in normal and myeloid leukemia cells, induction of neuronal cell differentiation, regulator of mesenchymal to epithelial conversion during kidney development, and may also have a role in immune tolerance at the maternal-fetal interface. Alternatively spliced transcript variants encoding multiple isoforms have been observed for this gene.

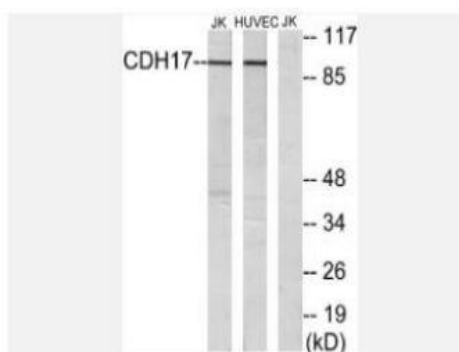
Products Images:



Western Blot analysis of Jurkat cells using LI-cadherin Polyclonal Antibody



Immunofluorescence analysis of HeLa cells, using CDH17 Antibody. The picture on the right is blocked with the synthesized peptide.



Western blot analysis of lysates from Jurkat and HUVEC cells, using CDH17 Antibody. The lane on the right is blocked with the synthesized peptide.