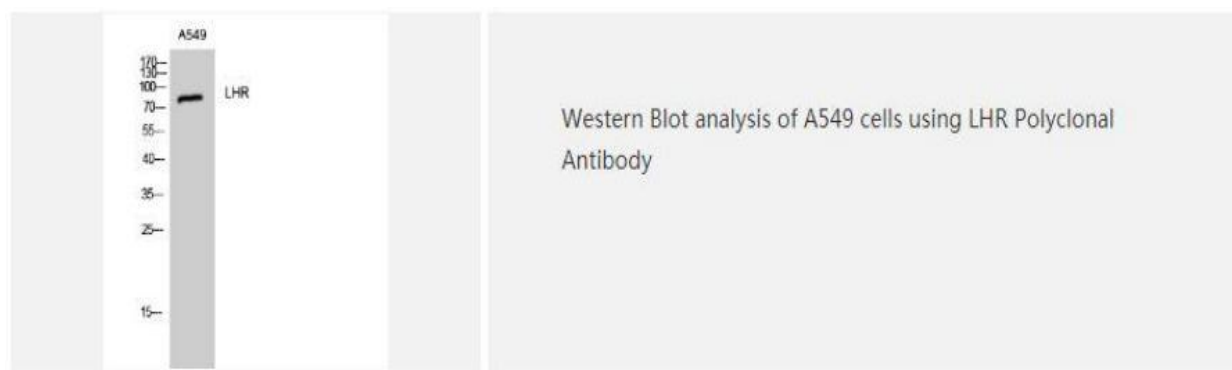
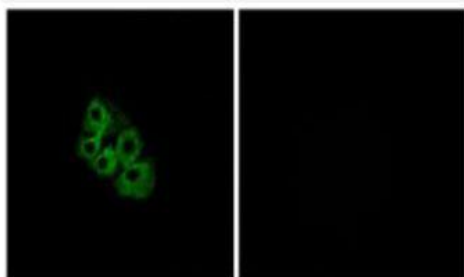


## LHR Polyclonal Antibody

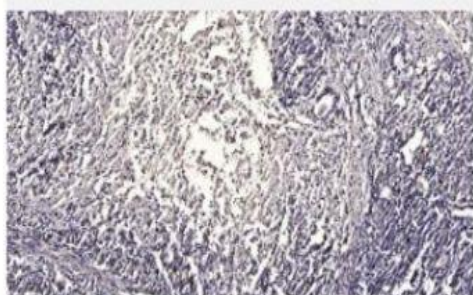
<b>Catalog No.</b>	IPB4188
<b>Reactivity</b>	Human; Mouse; Rat
<b>Applications</b>	WB; IF/ICC; ELISA
<b>Dilution</b>	WB: 1:500-1:2000 IF: 1:50-1:200 ELISA: 1:10000
<b>Gene Name</b>	LHCGR
<b>Protein Name</b>	Lutropin-choriogonadotropic hormone receptor
<b>Human Gene Id</b>	3973
<b>Swiss-Prot</b>	P22888
<b>Formulation</b>	Liquid in PBS containing 50% glycerol, 05% BSA and 002% sodium azide
<b>Source</b>	Rabbit
<b>Purification</b>	The antibody was affinity-purified from rabbit antiserum by affinity-chromatography using epitope-specific immunogen
<b>Concentration</b>	1 mg/ml
<b>Storage&amp;Stability</b>	-20°C/1 year
<b>Subcellular Location</b>	Cell membrane; Multi-pass membrane protein
<b>MW</b>	78616
<b>Background</b>	This gene encodes a member of a large protein family which contains the LIM domain, a unique cysteine-rich zinc-binding domain The encoded protein is a transcription factor important for the development of the renal and urogenital systems This gene is a candidate for Mayer-Rokitansky-Kuster-Hauser syndrome, a disorder characterized by anomalies in the female genital tract

### Products Images:





Immunofluorescence analysis of A549 cells, using LSHR Antibody. The picture on the right is blocked with the synthesized peptide.



Immunohistochemical analysis of paraffin-embedded human Gastric adenocarcinoma. 1, Antibody was diluted at 1:200(4° overnight). 2, Tris-EDTA,pH9.0 was used for antigen retrieval. 3,Secondary antibody was diluted at 1:200(room temperature, 45min).