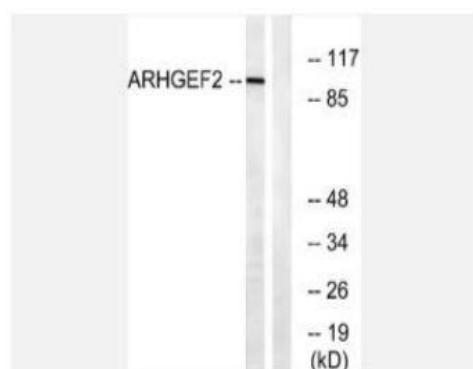


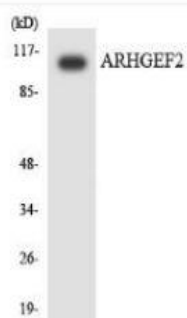
## Lfc Polyclonal Antibody

<b>Catalog No.</b>	IPB4186
<b>Reactivity</b>	Human; Mouse; Rat
<b>Applications</b>	WB; IHC; ELISA
<b>Dilution</b>	WB: 1:500-1:2000    IHC: 1:50-1:200    ELISA: 1:20000
<b>Gene Name</b>	ARHGEF2
<b>Protein Name</b>	Rho guanine nucleotide exchange factor 2
<b>Human Gene Id</b>	9181
<b>Swiss-Prot</b>	Q92974
<b>Formulation</b>	Liquid in PBS containing 50% glycerol, 05% BSA and 002% sodium azide
<b>Source</b>	Rabbit
<b>Purification</b>	The antibody was affinity-purified from rabbit antiserum by affinity-chromatography using epitope-specific immunogen
<b>Concentration</b>	1 mg/ml
<b>Storage&amp;Stability</b>	-20°C/1 year
<b>Subcellular Location</b>	Cytoplasm, cytoskeleton Cytoplasm Cell junction, tight junction Golgi apparatus Cytoplasm, cytoskeleton, spindle Cell projection, ruffle membrane Cytoplasmic vesicle Localizes to the tips of cortical microtubules of the mitotic spindle during cell division, and is further released upon microtubule depolymerization (PubMed:15827085) Recruited into membrane ruffles induced by Sflexneri at tight junctions of polarized epithelial cells (PubMed:19043560) Colocalized with NOD2 and RIPK2 in vesicles and with the cytoskeleton (PubMed:21887730)
<b>MW</b>	111543
<b>Background</b>	This gene encodes a member of the leucine-rich repeat-containing subgroup of the G protein-coupled 7-transmembrane protein superfamily The encoded protein is a glycoprotein hormone receptor with a large N-terminal extracellular domain that contains leucine-rich repeats important for the formation of a horseshoe-shaped interaction motif for ligand binding Alternative splicing of this gene results in multiple transcript variants

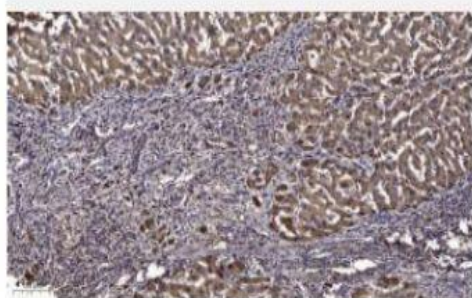
### Products Images:



Western blot analysis of lysates from RAW264.7 cells, using ARHGEF2 Antibody. The lane on the right is blocked with the synthesized peptide.



Western blot analysis of the lysates from COLO205 cells using ARHGEF2 antibody.



Immunohistochemical analysis of paraffin-embedded human liver cancer. 1, Antibody was diluted at 1:200(4° overnight). 2, Tris-EDTA,pH9.0 was used for antigen retrieval. 3,Secondary antibody was diluted at 1:200(room temperature, 45min).