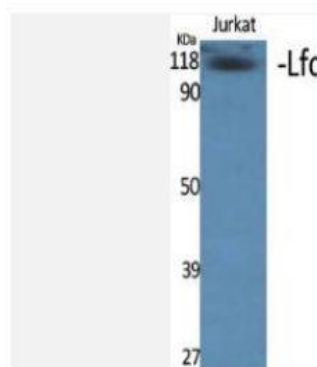


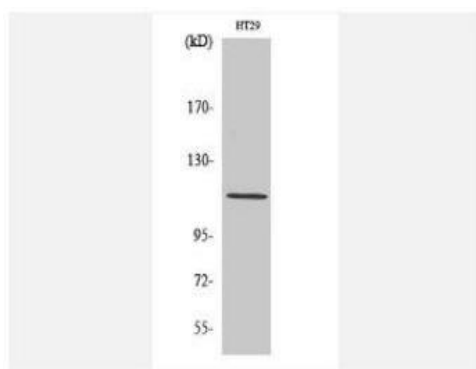
Lfc Polyclonal Antibody

Catalog No.	IPB4185
Reactivity	Human; Mouse; Rat
Applications	WB; ELISA
Dilution	WB: 1:500-1:2000 ELISA: 1:5000
Gene Name	ARHGEF2
Protein Name	Rho guanine nucleotide exchange factor 2
Human Gene Id	9181
Swiss-Prot	Q92974
Formulation	Liquid in PBS containing 50% glycerol, 05% BSA and 002% sodium azide
Source	Rabbit
Purification	The antibody was affinity-purified from rabbit antiserum by affinity-chromatography using epitope-specific immunogen
Concentration	1 mg/ml
Storage&Stability	-20°C/1 year
Subcellular Location	Cytoplasm, cytoskeleton Cytoplasm Cell junction, tight junction Golgi apparatus Cytoplasm, cytoskeleton, spindle Cell projection, ruffle membrane Cytoplasmic vesicle Localizes to the tips of cortical microtubules of the mitotic spindle during cell division, and is further released upon microtubule depolymerization (PubMed:15827085) Recruited into membrane ruffles induced by Sflexneri at tight junctions of polarized epithelial cells (PubMed:19043560) Colocalized with NOD2 and RIPK2 in vesicles and with the cytoskeleton (PubMed:21887730)
MW	111543
Background	Rho GTPases play a fundamental role in numerous cellular processes that are initiated by extracellular stimuli that work through G protein coupled receptors The encoded protein may form complex with G proteins and stimulate rho-dependent signals Alternatively spliced transcript variants encoding different isoforms have been identified

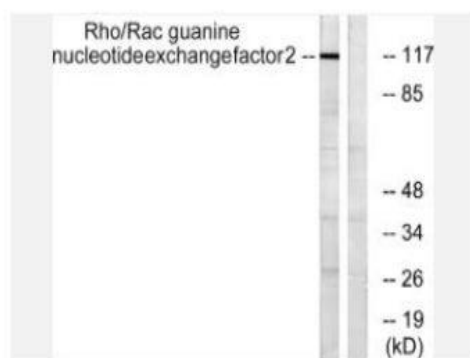
Products Images:



Western Blot analysis of various cells using Lfc Polyclonal Antibody diluted at 1:1000



Western Blot analysis of HT29 cells using Lfc Polyclonal Antibody diluted at 1:1000



Western blot analysis of lysates from NIH/3T3 cells, using Rho/Rac Guanine Nucleotide Exchange Factor 2 Antibody. The lane on the right is blocked with the synthesized peptide.