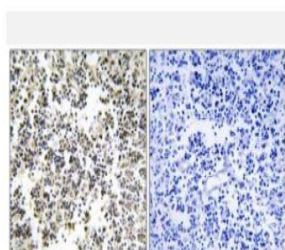


## Lambda 5 Polyclonal Antibody

<b>Catalog No.</b>	IPB4159
<b>Reactivity</b>	Human; Mouse; Rat
<b>Applications</b>	IHC; WB; ELISA
<b>Dilution</b>	WB: 1:500-2000    IHC: 1:50-1:200    ELISA: 1:40000
<b>Gene Name</b>	IGLL1
<b>Protein Name</b>	Immunoglobulin lambda-like polypeptide 1
<b>Human Gene Id</b>	3543
<b>Swiss-Prot</b>	P15814
<b>Formulation</b>	Liquid in PBS containing 50% glycerol, 05% BSA and 002% sodium azide
<b>Source</b>	Rabbit
<b>Purification</b>	The antibody was affinity-purified from rabbit antiserum by affinity-chromatography using epitope-specific immunogen
<b>Concentration</b>	1 mg/ml
<b>Storage&amp;Stability</b>	-20°C/1 year
<b>Subcellular Location</b>	Endoplasmic reticulum Secreted In pre-B cells, localizes predominantly to the endoplasmic reticulum
<b>MW</b>	22963
<b>Background</b>	The preB cell receptor is found on the surface of proB and preB cells, where it is involved in transduction of signals for cellular proliferation, differentiation from the proB cell to the preB cell stage, allelic exclusion at the Ig heavy chain gene locus, and promotion of Ig light chain gene rearrangements The preB cell receptor is composed of a membrane-bound Ig mu heavy chain in association with a heterodimeric surrogate light chain This gene encodes one of the surrogate light chain subunits and is a member of the immunoglobulin gene superfamily This gene does not undergo rearrangement Mutations in this gene can result in B cell deficiency and agammaglobulinemia, an autosomal recessive disease in which few or no gamma globulins or antibodies are made Two transcript variants encoding different isoforms have been found for this gene

### Products Images:



Immunohistochemistry analysis of paraffin-embedded human lymph node, using IGLL1 Antibody. The picture on the right is blocked with the synthesized peptide.