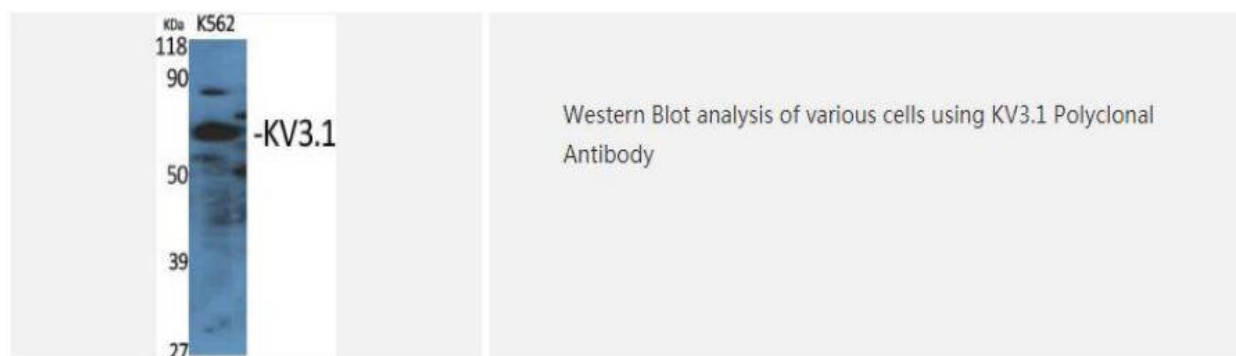
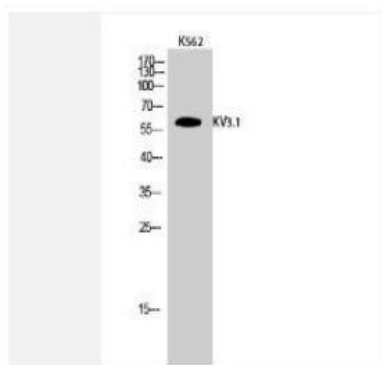


KV31 Polyclonal Antibody

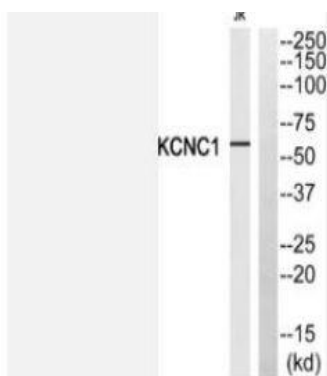
Catalog No.	IPB4149
Reactivity	Human; Mouse; Rat
Applications	WB; IHC; ELISA
Dilution	WB: 1:500-1:2000 IHC: 1:50-1:200 ELISA: 1:5000
Gene Name	KCNC1
Protein Name	Potassium voltage-gated channel subfamily C member 1
Human Gene Id	3746
Swiss-Prot	P48547
Formulation	Liquid in PBS containing 50% glycerol, 05% BSA and 002% sodium azide
Source	Rabbit
Purification	The antibody was affinity-purified from rabbit antiserum by affinity-chromatography using epitope-specific immunogen
Concentration	1 mg/ml
Storage&Stability	-20°C/1 year
Subcellular Location	Cell membrane; Multi-pass membrane protein Cell projection, axon Cell junction, synapse, presynaptic cell membrane Localizes in parallel fiber membranes, distributed on the perisynaptic and extrasynaptic membranes away from the active zones
MW	57942
Background	The Shaker gene family of Drosophila encodes components of voltage-gated potassium channels and is comprised of four subfamilies Based on sequence similarity, this gene is similar to one of these subfamilies, namely the Shaw subfamily The protein encoded by this gene belongs to the delayed rectifier class of channel proteins and is an integral membrane protein that mediates the voltage-dependent potassium ion permeability of excitable membranes Several transcript variants encoding different isoforms have been found for this gene

Products Images:





Western Blot analysis of K562 cells using KV3.1 Polyclonal Antibody



Western blot analysis of KCNC1 Antibody. The lane on the right is blocked with the KCNC1 peptide.