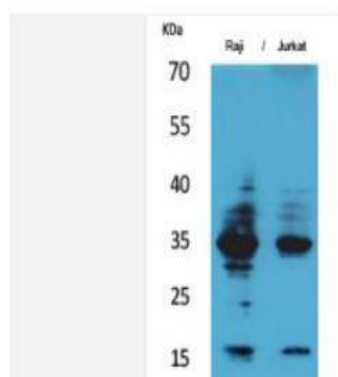


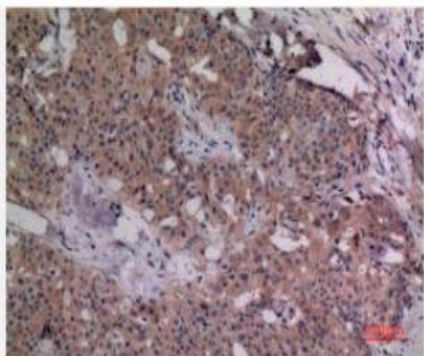
## IL-4 Polyclonal Antibody

|                              |   |
|------------------------------|---|
| <b>Catalog No.</b>           | IPB3904   |
| <b>Reactivity</b>            | Human; Mouse;   |
| <b>Applications</b>          | WB; IHC; ELISA  |
| <b>Dilution</b>              | WB: 1:500-1:2000    IHC-p: 1:100-1:200    ELISA: 1:20000  |
| <b>Gene Name</b>             | IL4   |
| <b>Protein Name</b>          | Interleukin-4   |
| <b>Human Gene Id</b>         | 3565  |
| <b>Swiss-Prot</b>            | P05112  |
| <b>Formulation</b>           | Liquid in PBS containing 50% glycerol, 05% BSA and 002% sodium azide  |
| <b>Source</b>                | Rabbit  |
| <b>Purification</b>          | The antibody was affinity-purified from rabbit antiserum by affinity-chromatography using epitope-specific immunogen  |
| <b>Concentration</b>         | 1 mg/ml   |
| <b>Storage&amp;Stability</b> | -20°C/1 year  |
| <b>Subcellular Location</b>  | Secreted  |
| <b>MW</b>                    | 17492   |
| <b>Background</b>            | This gene encodes a protein with limited similarity to L-amino acid oxidase which contains the conserved amino acids thought to be involved in catalysis and binding of flavin adenine dinucleotide (FAD) cofactor The expression of this gene can be induced by interleukin 4 in B cells, however, expression of transcripts containing the first two exons of the upstream gene is found in other cell types Multiple transcript variants encoding different isoforms have been found for this gene |

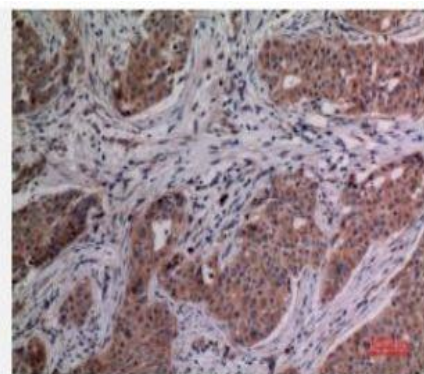
### Products Images:



Western Blot analysis of Raji, Jurkat cells using IL-4 Polyclonal Antibody. Secondary antibody(catalog#:RS0002) was diluted at 1:20000



Immunohistochemical analysis of paraffin-embedded human-breast-cancer, antibody was diluted at 1:100



Immunohistochemical analysis of paraffin-embedded human-breast-cancer, antibody was diluted at 1:100