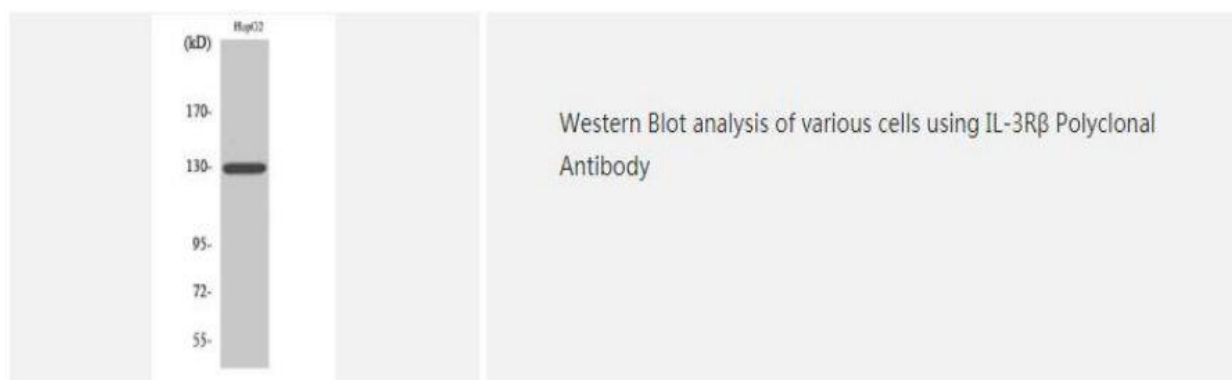
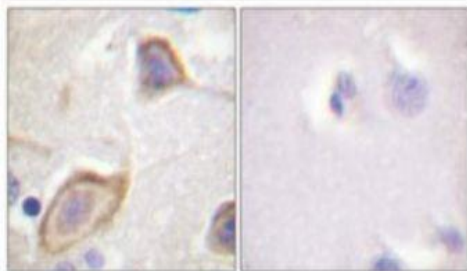


IL-3R β Polyclonal Antibody

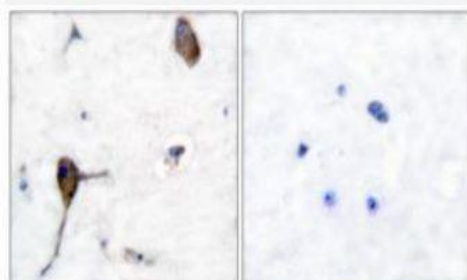
Catalog No.	IPB3902
Reactivity	Human; Mouse; Rat
Applications	WB; IHC; ELISA
Dilution	WB: 1:500-1:2000 IHC: 1:50-1:200 ELISA: 1:5000
Gene Name	CSF2RB
Protein Name	Cytokine receptor common subunit beta
Human Gene Id	1439
Swiss-Prot	P32927
Formulation	Liquid in PBS containing 50% glycerol, 05% BSA and 002% sodium azide
Source	Rabbit
Purification	The antibody was affinity-purified from rabbit antiserum by affinity-chromatography using epitope-specific immunogen
Concentration	1 mg/ml
Storage&Stability	-20°C/1 year
Subcellular Location	Membrane; Single-pass type I membrane protein
MW	97336
Background	The protein encoded by this gene is a pleiotropic cytokine produced by activated T cells This cytokine is a ligand for interleukin 4 receptor The interleukin 4 receptor also binds to IL13, which may contribute to many overlapping functions of this cytokine and IL13 STAT6, a signal transducer and activator of transcription, has been shown to play a central role in mediating the immune regulatory signal of this cytokine This gene, IL3, IL5, IL13, and CSF2 form a cytokine gene cluster on chromosome 5q, with this gene particularly close to IL13 This gene, IL13 and IL5 are found to be regulated coordinately by several long-range regulatory elements in an over 120 kilobase range on the chromosome Two alternatively spliced transcript variants of this gene encoding distinct isoforms have been reported

Products Images:





Immunohistochemical analysis of paraffin-embedded Human brain. Antibody was diluted at 1:100(4° overnight). High-pressure and temperature Tris-EDTA,pH8.0 was used for antigen retrieval. Negative contrl (right) obtained from antibody was pre-absorbed by immunogen peptide.



Immunohistochemistry analysis of paraffin-embedded human brain tissue, using IL-3R beta Antibody. The picture on the right is blocked with the synthesized peptide.