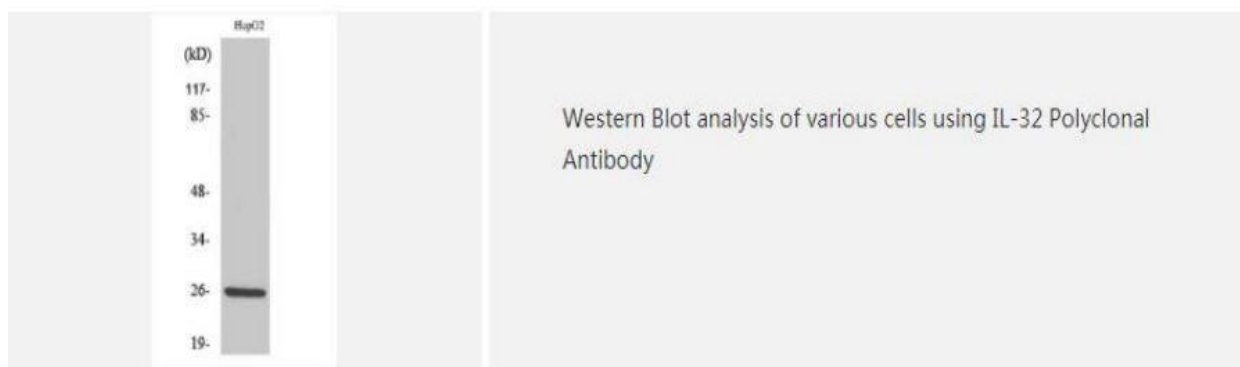
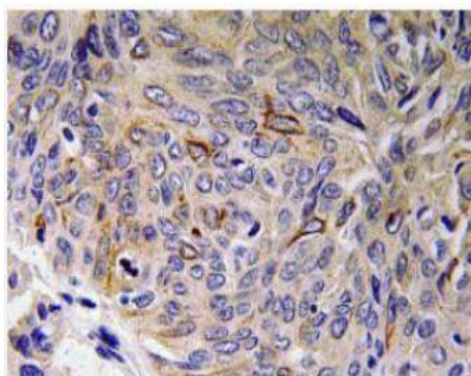


IL-32 Polyclonal Antibody

Catalog No.	IPB3900
Reactivity	Human; Mouse; Rat
Applications	WB; IHC; ELISA
Dilution	WB: 1:500-1:2000 IHC: 1:50-1:200 ELISA: 1:40000
Gene Name	IL32
Protein Name	Interleukin-32
Human Gene Id	9235
Swiss-Prot	P24001
Formulation	Liquid in PBS containing 50% glycerol, 05% BSA and 002% sodium azide
Source	Rabbit
Purification	The antibody was affinity-purified from rabbit antiserum by affinity-chromatography using epitope-specific immunogen
Concentration	1 mg/ml
Storage&Stability	-20°C/1 year
Subcellular Location	Secreted
MW	26676
Background	The protein encoded by this gene is an interleukin 3 specific subunit of a heterodimeric cytokine receptor The receptor is comprised of a ligand specific alpha subunit and a signal transducing beta subunit shared by the receptors for interleukin 3 (IL3), colony stimulating factor 2 (CSF2:GM-CSF), and interleukin 5 (IL5) The binding of this protein to IL3 depends on the beta subunit The beta subunit is activated by the ligand binding, and is required for the biological activities of IL3 This gene and the gene encoding the colony stimulating factor 2 receptor alpha chain (CSF2RA) form a cytokine receptor gene cluster in a X-Y pseudoautosomal region on chromosomes X or Y Alternatively spliced transcript variants encoding distinct isoforms have been found

Products Images:





Immunohistochemistry analysis of IL-32 antibody in paraffin-embedded human lung carcinoma tissue.



Western blot analysis of lysate from HepG2 cells, using IL-32 antibody.