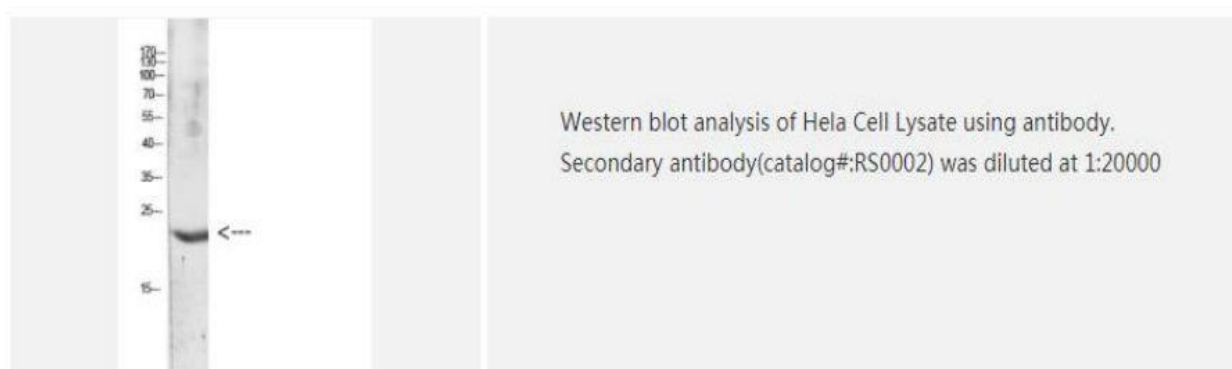
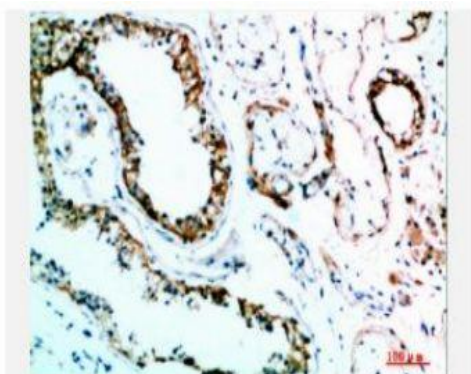


## IL-31 Polyclonal Antibody

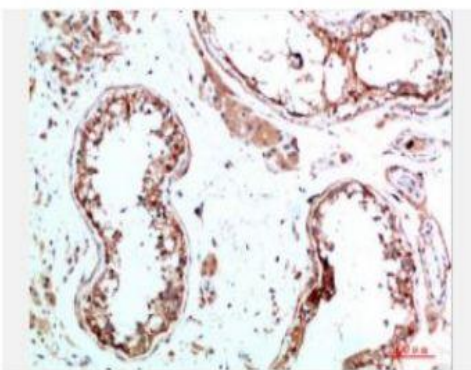
<b>Catalog No.</b>	IPB3898
<b>Reactivity</b>	Human; Mouse; Rat
<b>Applications</b>	WB; IHC; ELISA
<b>Dilution</b>	WB: 1:500-2000    IHC-p: 1:100-1:200    ELISA: 1:10000-20000
<b>Gene Name</b>	IL31
<b>Protein Name</b>	Interleukin-31 (IL-31)
<b>Human Gene Id</b>	386653
<b>Swiss-Prot</b>	Q6EBC2
<b>Formulation</b>	Liquid in PBS containing 50% glycerol, 05% BSA and 002% sodium azide
<b>Source</b>	Rabbit
<b>Purification</b>	The antibody was affinity-purified from rabbit antiserum by affinity-chromatography using epitope-specific immunogen
<b>Concentration</b>	1 mg/ml
<b>Storage&amp;Stability</b>	-20°C/1 year
<b>Subcellular Location</b>	Secreted
<b>MW</b>	-
<b>Background</b>	The protein encoded by this gene belongs to the type I cytokine receptor family This receptor, with homology to gp130, is expressed on monocytes, and is involved in IL-31 signaling via activation of STAT-3 and STAT-5 It functions either as a monomer, or as part of a receptor complex with oncostatin M receptor (OSMR) Several alternatively spliced transcript variants encoding different isoforms have been noted for this gene

### Products Images:

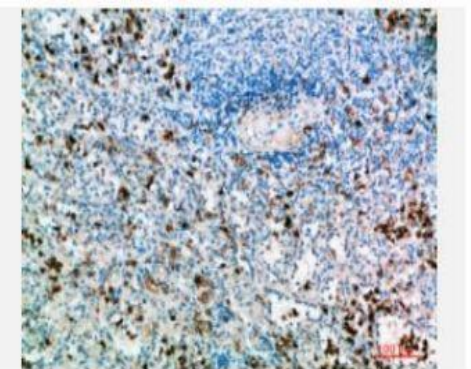




Immunohistochemical analysis of paraffin-embedded human-testis, antibody was diluted at 1:200



Immunohistochemical analysis of paraffin-embedded human-testis, antibody was diluted at 1:200



Immunohistochemical analysis of paraffin-embedded human-spleen, antibody was diluted at 1:200