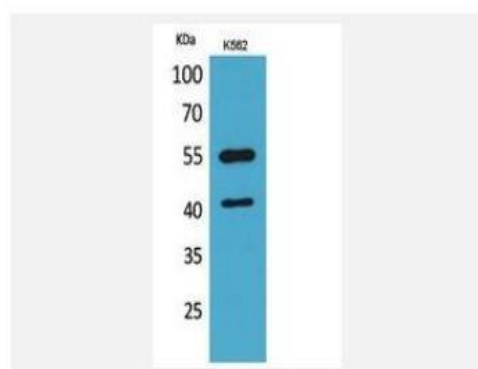


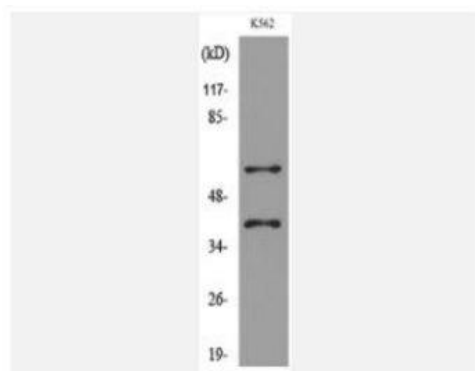
IL-2R γ Polyclonal Antibody

Catalog No.	IPB3897
Reactivity	Human; Mouse; Rat
Applications	WB; ELISA
Dilution	WB: 1:500-1:2000 ELISA: 1:20000
Gene Name	IL2RG
Protein Name	Cytokine receptor common subunit gamma
Human Gene Id	3561
Swiss-Prot	P31785
Formulation	Liquid in PBS containing 50% glycerol, 05% BSA and 002% sodium azide
Source	Rabbit
Purification	The antibody was affinity-purified from rabbit antiserum by affinity-chromatography using epitope-specific immunogen
Concentration	1 mg/ml
Storage&Stability	-20°C/1 year
Subcellular Location	Cell membrane; Single-pass type I membrane protein Cell surface
MW	42287
Background	IL31, which is made principally by activated Th2-type T cells, interacts with a heterodimeric receptor consisting of IL31RA (MIM 609510) and OSMR (MIM 601743) that is constitutively expressed on epithelial cells and keratinocytes IL31 may be involved in the promotion of allergic skin disorders and in regulating other allergic diseases, such as asthma (Dillon et al, 2004 [PubMed 15184896])

Products Images:



Western Blot analysis of K562 cells using IL-2R γ Polyclonal Antibody. Secondary antibody(catalog#:RS0002) was diluted at 1:20000



Western blot analysis of lysate from K562 cells, using IL2RG Antibody.