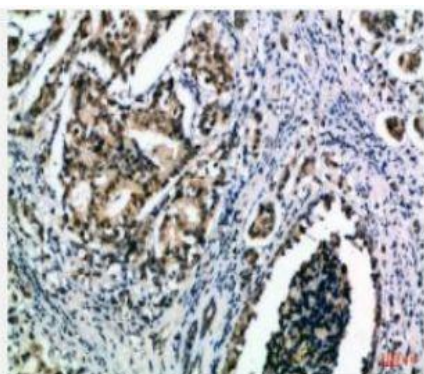


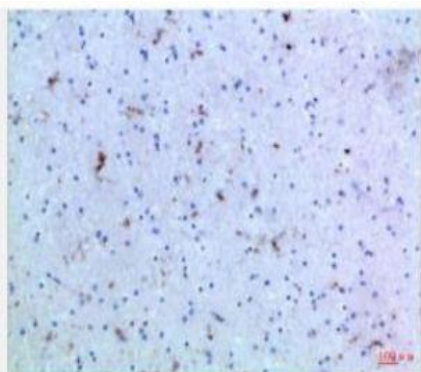
## IL-15 Polyclonal Antibody

<b>Catalog No.</b>	IPB3857
<b>Reactivity</b>	Human; Mouse; Rat
<b>Applications</b>	IHC; ELISA
<b>Dilution</b>	IHC-p: 1:100-1:200    ELISA: 1:10000-20000
<b>Gene Name</b>	IL15
<b>Protein Name</b>	Interleukin-15 (IL-15)
<b>Human Gene Id</b>	3600
<b>Swiss-Prot</b>	P40933
<b>Formulation</b>	Liquid in PBS containing 50% glycerol, 05% BSA and 002% sodium azide
<b>Source</b>	Rabbit
<b>Purification</b>	The antibody was affinity-purified from rabbit antiserum by affinity-chromatography using epitope-specific immunogen
<b>Concentration</b>	1 mg/ml
<b>Storage&amp;Stability</b>	-20°C/1 year
<b>Subcellular Location</b>	[Isoform IL15-S48AA]: Secreted [Isoform IL15-S21AA]: Cytoplasm Nucleus IL15-S21AA is not secreted, but rather is stored intracellularly, appearing in the nucleus and cytoplasmic components
<b>MW</b>	-
<b>Background</b>	This gene encodes a cytokine receptor that specifically binds interleukin 15 (IL15) with high affinity The receptors of IL15 and IL2 share two subunits, IL2R beta and IL2R gamma This forms the basis of many overlapping biological activities of IL15 and IL2 The protein encoded by this gene is structurally related to IL2R alpha, an additional IL2-specific alpha subunit necessary for high affinity IL2 binding Unlike IL2RA, IL15RA is capable of binding IL15 with high affinity independent of other subunits, which suggests distinct roles between IL15 and IL2 This receptor is reported to enhance cell proliferation and expression of apoptosis inhibitor BCL2L1:BCL2-XL and BCL2 Multiple alternatively spliced transcript variants of this gene have been reported

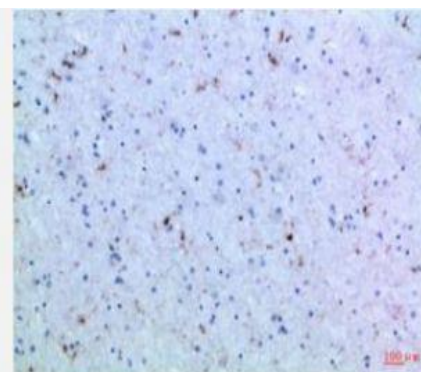
### Products Images:



Immunohistochemical analysis of paraffin-embedded  
Human-breast-cancer, antibody was diluted at 1:100



Immunohistochemical analysis of paraffin-embedded  
Human-brain, antibody was diluted at 1:100



Immunohistochemical analysis of paraffin-embedded  
Human-brain, antibody was diluted at 1:100