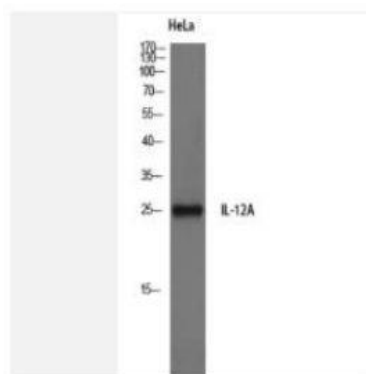


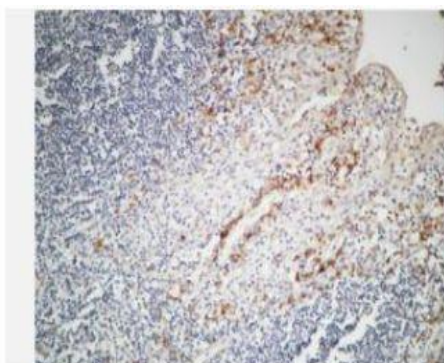
IL-12A Polyclonal Antibody

Catalog No.	IPB3849
Reactivity	Human; Mouse; Rat
Applications	WB; IHC; ELISA
Dilution	WB: 1:500-1:2000 IHC: 1:50-1:200 ELISA: 1:20000
Gene Name	IL12A
Protein Name	Interleukin-12 subunit alpha
Human Gene Id	3592
Swiss-Prot	P29459
Formulation	Liquid in PBS containing 50% glycerol, 05% BSA and 002% sodium azide
Source	Rabbit
Purification	The antibody was affinity-purified from rabbit antiserum by affinity-chromatography using epitope-specific immunogen
Concentration	1 mg/ml
Storage&Stability	-20°C/1 year
Subcellular Location	Secreted
MW	24874
Background	<p>This gene encodes a subunit of interleukin 12, a cytokine that acts on T and natural killer cells, and has a broad array of biological activities Interleukin 12 is a disulfide-linked heterodimer composed of the 40 kD cytokine receptor like subunit encoded by this gene, and a 35 kD subunit encoded by IL12A This cytokine is expressed by activated macrophages that serve as an essential inducer of Th1 cells development This cytokine has been found to be important for sustaining a sufficient number of memory:effector Th1 cells to mediate long-term protection to an intracellular pathogen Overexpression of this gene was observed in the central nervous system of patients with multiple sclerosis (MS), suggesting a role of this cytokine in the pathogenesis of the disease The promoter polymorphism of this gene has been reported to be associated with the severity of atopic and non-atopic asthma in children</p>

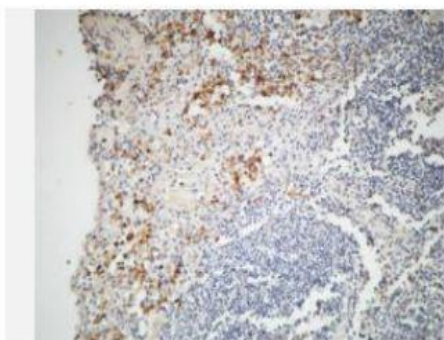
Products Images:



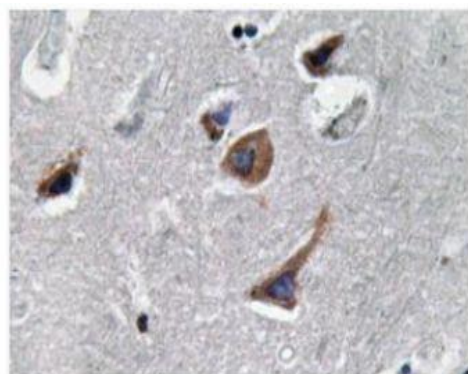
Western Blot analysis of HeLa cells using IL-12A Polyclonal Antibody



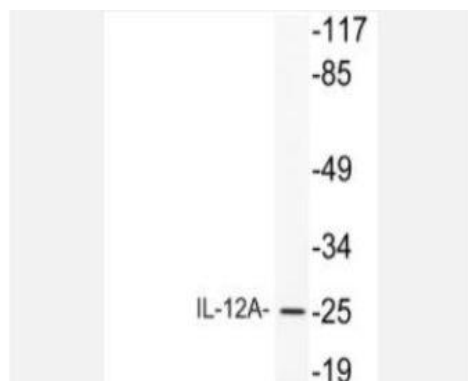
Immunohistochemical analysis of paraffin-embedded Human Amygdala. 1, Antibody was diluted at 1:200(4° overnight). 2, High-pressure and temperature EDTA, pH8.0 was used for antigen retrieval. 3, Secondary antibody was diluted at 1:200(room temperature, 30min).



Immunohistochemical analysis of paraffin-embedded Human Amygdala. 1, Antibody was diluted at 1:200(4° overnight). 2, High-pressure and temperature EDTA, pH8.0 was used for antigen retrieval. 3, Secondary antibody was diluted at 1:200(room temperature, 30min).



Immunohistochemistry analysis of IL-12A antibody in paraffin-embedded human brain tissue.



Western blot analysis of lysate from HeLa cells, using IL-12A antibody.