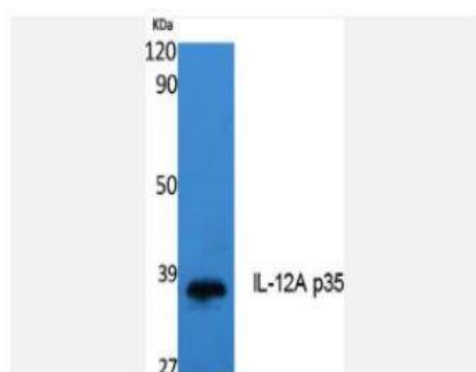


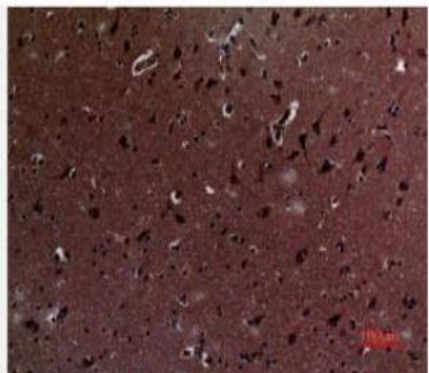
IL-12A p35 Polyclonal Antibody

Catalog No.	IPB3847
Reactivity	Human; Mouse; Rat
Applications	WB; IHC; ELISA
Dilution	WB: 1:500-1:2000 IHC-p: 1:100-1:200 ELISA: 1:50000
Gene Name	IL12A
Protein Name	Interleukin-12 subunit alpha
Human Gene Id	3592
Swiss-Prot	P29459
Formulation	Liquid in PBS containing 50% glycerol, 05% BSA and 002% sodium azide
Source	Rabbit
Purification	The antibody was affinity-purified from rabbit antiserum by affinity-chromatography using epitope-specific immunogen
Concentration	1 mg/ml
Storage&Stability	-20°C/1 year
Subcellular Location	Secreted
MW	24874
Background	This gene encodes a subunit of a cytokine that acts on T and natural killer cells, and has a broad array of biological activities The cytokine is a disulfide-linked heterodimer composed of the 35-kD subunit encoded by this gene, and a 40-kD subunit that is a member of the cytokine receptor family This cytokine is required for the T-cell-independent induction of interferon (IFN)-gamma, and is important for the differentiation of both Th1 and Th2 cells The responses of lymphocytes to this cytokine are mediated by the activator of transcription protein STAT4 Nitric oxide synthase 2A (NOS2A:NOS2) is found to be required for the signaling process of this cytokine in innate immunity

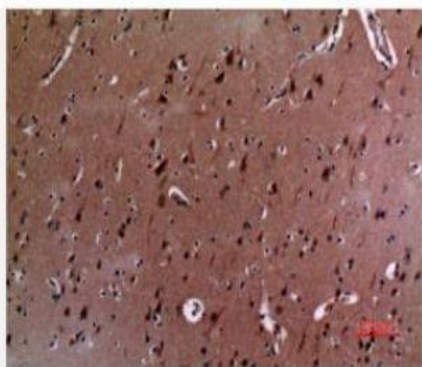
Products Images:



Western Blot analysis of extracts from K562 cells, using IL-12A p35 Polyclonal Antibody. Secondary antibody(catalog#:RS0002) was diluted at 1:20000



Immunohistochemical analysis of paraffin-embedded human-brain, antibody was diluted at 1:100



Immunohistochemical analysis of paraffin-embedded human-brain, antibody was diluted at 1:100