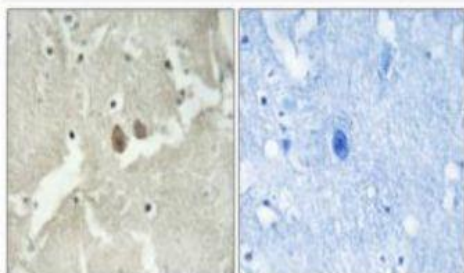


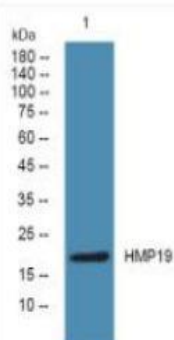
HMP19 Polyclonal Antibody

Catalog No.	IPB3683
Reactivity	Human; Mouse;
Applications	IHC; WB; ELISA
Dilution	WB: 1:500-2000 IHC: 1:50-1:200 ELISA: 1:20000
Gene Name	NSG2
Protein Name	Neuron-specific protein family member 2
Human Gene Id	51617
Swiss-Prot	Q9Y328
Formulation	Liquid in PBS containing 50% glycerol, 05% BSA and 002% sodium azide
Source	Rabbit
Purification	The antibody was affinity-purified from rabbit antiserum by affinity-chromatography using epitope-specific immunogen
Concentration	1 mg/ml
Storage&Stability	-20°C/1 year
Subcellular Location	Membrane; Single-pass type II membrane protein Golgi apparatus, trans-Golgi network membrane Cell projection, dendrite Endosome membrane Early endosome membrane Late endosome membrane Lysosome lumen Cytoplasmic vesicle membrane Golgi apparatus, Golgi stack membrane Endosome, multivesicular body membrane Endocytosed from the cell surface, thus entered into early endosomes, trafficks to late endosomes and degrades in lysosomes (By similarity) Mainly Golgi stack, but also found in small vacuolar organelles and multivesicular bodies Found in both stationary and motile endosomes (By similarity)
MW	19085
Background	This gene encodes a member of the homeodomain-containing superfamily of transcription factors The protein binds to DNA as either a homodimer, or a heterodimer with the related protein hepatocyte nuclear factor 1-alpha The gene has been shown to function in nephron development, and regulates development of the embryonic pancreas Mutations in this gene result in renal cysts and diabetes syndrome and noninsulin-dependent diabetes mellitus, and expression of this gene is altered in some types of cancer Multiple transcript variants encoding different isoforms have been found for this gene

Products Images:



Immunohistochemistry analysis of paraffin-embedded human brain tissue, using NSG2 Antibody. The picture on the right is blocked with the synthesized peptide.



Western blot analysis of lysates from DU145 cells, primary antibody was diluted at 1:1000, 4° over night