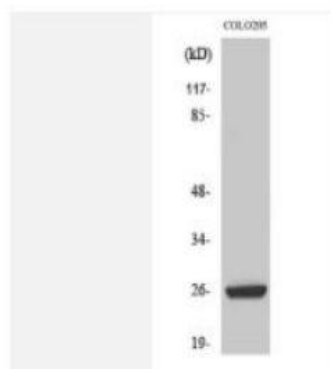


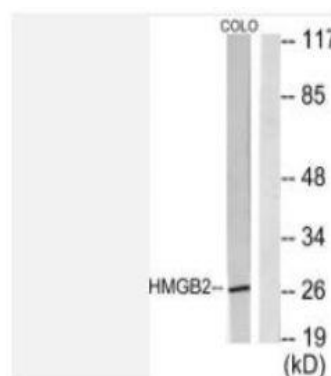
HMG-2 Polyclonal Antibody

Catalog No.	IPB3682
Reactivity	Human; Mouse; Rat
Applications	WB; IHC; IF/ICC; ELISA
Dilution	WB: 1:500-1:2000 IHC: 1:50-1:200 IF: 1:50-1:200 ELISA: 1:10000
Gene Name	HMGB2
Protein Name	High mobility group protein B2
Human Gene Id	3148
Swiss-Prot	P26583
Formulation	Liquid in PBS containing 50% glycerol, 05% BSA and 002% sodium azide
Source	Rabbit
Purification	The antibody was affinity-purified from rabbit antiserum by affinity-chromatography using epitope-specific immunogen
Concentration	1 mg/ml
Storage&Stability	-20°C/1 year
Subcellular Location	Nucleus Chromosome Cytoplasm Secreted In basal state predominantly nuclear
MW	24034
Background	similarity: Belongs to the NSG family,subcellular location: Mainly Golgi stack, but also found in small vacuolar organelles and multivesicular bodies

Products Images:



Western Blot analysis of various cells using HMG-2 Polyclonal Antibody



Western blot analysis of lysates from COLO205 cells, using HMGB2 Antibody. The lane on the right is blocked with the synthesized peptide.



Immunohistochemical analysis of paraffin-embedded human liver cancer. 1, Antibody was diluted at 1:200(4° overnight). 2, Tris-EDTA,pH9.0 was used for antigen retrieval. 3,Secondary antibody was diluted at 1:200(room temperature, 45min).