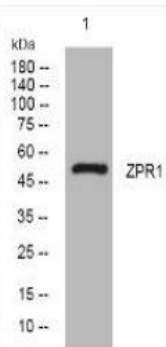


ZPR1 rabbit pAb

Catalog No.	IPB14350
Reactivity	Human; Mouse;
Applications	WB
Dilution	WB: 1:500-2000
Gene Name	ZNF259 ZPR1
Protein Name	ZPR1
Human Gene Id	8882
Swiss-Prot	O75312
Formulation	Liquid in PBS containing 50% glycerol, 05% BSA and 002% sodium azide
Source	Rabbit
Purification	The antibody was affinity-purified from rabbit serum by affinity-chromatography using specific immunogen
Concentration	1 mg/ml
Storage&Stability	-20°C/1 year
Subcellular Location	Nucleus Nucleus, nucleolus Nucleus, gem Nucleus, Cajal body Cytoplasm, perinuclear region Cytoplasm Cell projection, axon Cell projection, growth cone Colocalized with SMN1 in Gemini of coiled bodies (gems), Cajal bodies, axon and growth cones of neurons (By similarity) Localized predominantly in the cytoplasm in serum-starved cells growth arrested in G0 of the mitotic cell cycle Localized both in the nucleus and cytoplasm at the G1 phase of the mitotic cell cycle Accumulates in the subnuclear bodies during progression into the S phase of the mitotic cell cycle Diffusely localized throughout the cell during mitosis Colocalized with NPAT and SMN1 in nuclear bodies including gems (Gemini of coiled bodies) and Cajal bodies in a cell cycle-dependent manner Translocates together with EEF1A1 from the cytoplasm to the nucleolus after treatment with mitogens Colocalized with EGFR in the cytoplasm of quiescent cells Translocates from the cytoplasm to the nucleus in an epidermal growth factor (EGF)-dependent manner
MW	50490
Background	The protein encoded by this gene is found in the cytoplasm of quiescent cells but translocates to the nucleolus in proliferating cells The encoded protein interacts with survival motor neuron protein (SMN1) to enhance pre-mRNA splicing and to induce neuronal differentiation and axonal growth Defects in this gene or the SMN1 gene can cause spinal muscular atrophy Two transcript variants encoding different isoforms have been found for this gene

Products Images:



Western blot analysis of lysates from MCF-7 cells, primary antibody was diluted at 1:1000, 4° over night