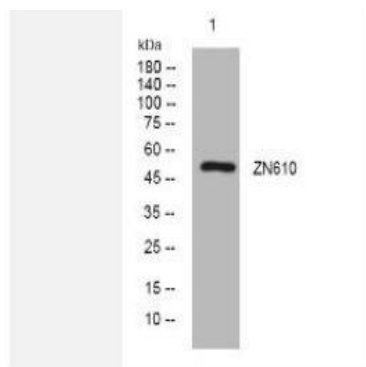


## ZN610 rabbit pAb

<b>Catalog No.</b>	IPB14278
<b>Reactivity</b>	Human; Mouse; Rat
<b>Applications</b>	WB
<b>Dilution</b>	WB: 1:500-2000
<b>Gene Name</b>	ZNF610
<b>Protein Name</b>	ZN610
<b>Human Gene Id</b>	162963
<b>Swiss-Prot</b>	Q8N9Z0
<b>Formulation</b>	Liquid in PBS containing 50% glycerol, 05% BSA and 002% sodium azide
<b>Source</b>	Rabbit
<b>Purification</b>	The antibody was affinity-purified from rabbit serum by affinity-chromatography using specific immunogen
<b>Concentration</b>	1 mg/ml
<b>Storage&amp;Stability</b>	-20°C/1 year
<b>Subcellular Location</b>	Nucleus
<b>MW</b>	50820
<b>Background</b>	-

### Products Images:



Western blot analysis of lysates from A549 cells, primary antibody was diluted at 1:1000, 4° over night