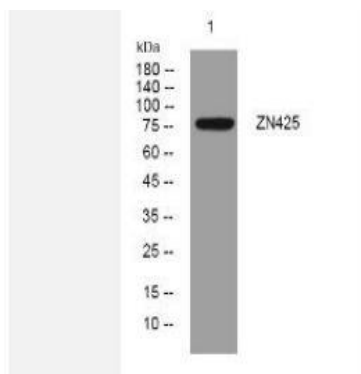


ZN425 rabbit pAb

Catalog No.	IPB14236
Reactivity	Human; Mouse; Rat
Applications	WB
Dilution	WB: 1:500-2000
Gene Name	ZNF425
Protein Name	ZN425
Human Gene Id	155054
Swiss-Prot	Q6IV72
Formulation	Liquid in PBS containing 50% glycerol, 05% BSA and 002% sodium azide
Source	Rabbit
Purification	The antibody was affinity-purified from rabbit serum by affinity-chromatography using specific immunogen
Concentration	1 mg/ml
Storage&Stability	-20°C/1 year
Subcellular Location	Nucleus Cytoplasm Predominantly expressed in the nucleus
MW	82720
Background	-

Products Images:



Western blot analysis of lysates from KB cells, primary antibody was diluted at 1:1000, 4° over night