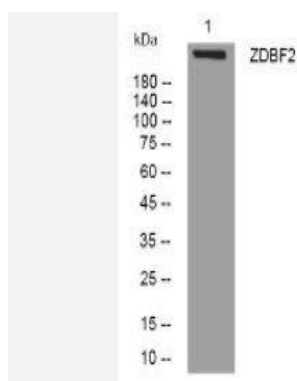


ZDBF2 rabbit pAb

Catalog No.	IPB14155
Reactivity	Human; Mouse;
Applications	WB
Dilution	WB: 1:500-2000
Gene Name	ZDBF2 KIAA1571
Protein Name	ZDBF2
Human Gene Id	57683
Swiss-Prot	Q9HCK1
Formulation	Liquid in PBS containing 50% glycerol, 05% BSA and 002% sodium azide
Source	Rabbit
Purification	The antibody was affinity-purified from rabbit serum by affinity-chromatography using specific immunogen
Concentration	1 mg/ml
Storage&Stability	-20°C/1 year
Subcellular Location	-
MW	258940
Background	This gene encodes a protein containing DBF4-type zinc finger domains This gene is imprinted and paternally expressed in lymphocytes but is more stochastically expressed in the placenta Alternative splicing results in multiple transcript variants

Products Images:



Western blot analysis of lysates from U2OS cells, primary antibody was diluted at 1:1000, 4° over night