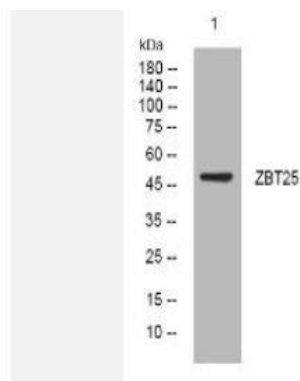


ZBT25 rabbit pAb

Catalog No.	IPB14143
Reactivity	Human; Mouse; Rat
Applications	WB
Dilution	WB: 1:500-2000
Gene Name	ZBTB25 C14orf51 KUP ZNF46
Protein Name	ZBT25
Human Gene Id	7597
Swiss-Prot	P24278
Formulation	Liquid in PBS containing 50% glycerol, 05% BSA and 002% sodium azide
Source	Rabbit
Purification	The antibody was affinity-purified from rabbit serum by affinity-chromatography using specific immunogen
Concentration	1 mg/ml
Storage&Stability	-20°C/1 year
Subcellular Location	Nucleus
MW	47850
Background	-

Products Images:



Western blot analysis of lysates from U2OS cells, primary antibody was diluted at 1:1000, 4° over night