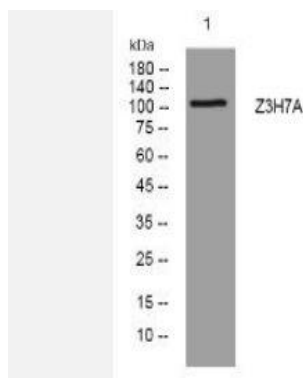


Z3H7A rabbit pAb

Catalog No.	IPB14129
Reactivity	Human; Mouse; Rat
Applications	WB
Dilution	WB: 1:500-2000
Gene Name	ZC3H7A ZC3H7 ZC3HDC7 HSPC055
Protein Name	Z3H7A
Human Gene Id	29066
Swiss-Prot	Q8IWR0
Formulation	Liquid in PBS containing 50% glycerol, 05% BSA and 0287% sodium azide
Source	Rabbit
Purification	The antibody was affinity-purified from rabbit serum by affinity-chromatography using specific immunogen
Concentration	1 mg/ml
Storage&Stability	-20°C/1 year
Subcellular Location	Nucleus
MW	-
Background	-

Products Images:



Western blot analysis of lysates from KB cells, primary antibody was diluted at 1:1000, 4° over night