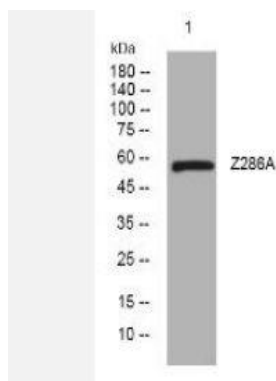


Z286A rabbit pAb

Catalog No.	IPB14126
Reactivity	Human; Mouse; Rat
Applications	WB
Dilution	WB: 1:500-2000
Gene Name	ZNF286A KIAA1874 ZNF286
Protein Name	Z286A
Human Gene Id	57335
Swiss-Prot	Q9HBT8
Formulation	Liquid in PBS containing 50% glycerol, 05% BSA and 002% sodium azide
Source	Rabbit
Purification	The antibody was affinity-purified from rabbit serum by affinity-chromatography using specific immunogen
Concentration	1 mg/ml
Storage&Stability	-20°C/1 year
Subcellular Location	Nucleus
MW	57310
Background	-

Products Images:



Western blot analysis of lysates from AD293 cells, primary antibody was diluted at 1:1000, 4° over night