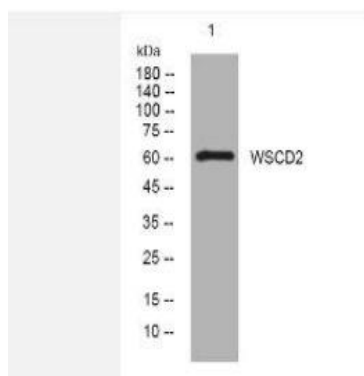


WSCD2 rabbit pAb

Catalog No.	IPB14074
Reactivity	Human; Mouse;
Applications	WB
Dilution	WB: 1:500-2000
Gene Name	WSCD2 KIAA0789
Protein Name	WSCD2
Human Gene Id	9671
Swiss-Prot	Q2TBF2
Formulation	Liquid in PBS containing 50% glycerol, 05% BSA and 0130% sodium azide
Source	Rabbit
Purification	The antibody was affinity-purified from rabbit serum by affinity-chromatography using specific immunogen
Concentration	1 mg/ml
Storage&Stability	-20°C/1 year
Subcellular Location	Membrane; Single-pass membrane protein
MW	-
Background	-

Products Images:



Western blot analysis of lysates from 293T cells, primary antibody was diluted at 1:1000, 4° over night