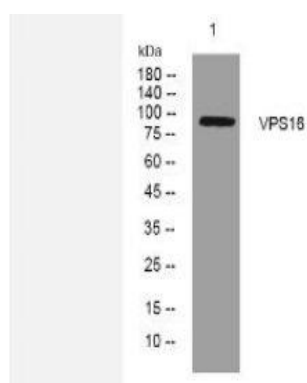


VPS16 rabbit pAb

Catalog No.	IPB14030
Reactivity	Human; Mouse;
Applications	WB
Dilution	WB: 1:500-2000
Gene Name	VPS16
Protein Name	VPS16
Human Gene Id	64601
Swiss-Prot	Q9H269
Formulation	Liquid in PBS containing 50% glycerol, 05% BSA and 002% sodium azide
Source	Rabbit
Purification	The antibody was affinity-purified from rabbit serum by affinity-chromatography using specific immunogen
Concentration	1 mg/ml
Storage&Stability	-20°C/1 year
Subcellular Location	Late endosome membrane; Peripheral membrane protein; Cytoplasmic side Lysosome membrane; Peripheral membrane protein; Cytoplasmic side Early endosome Cytoplasmic vesicle, clathrin-coated vesicle Cytoplasmic vesicle, autophagosome Colocalizes with AP-3, clathrin, Rab5 and Rab7b (By similarity) Cytoplasmic, peripheral membrane protein associated with early endosomes and late endosomes:lysosomes
MW	92290
Background	Vesicle mediated protein sorting plays an important role in segregation of intracellular molecules into distinct organelles Genetic studies in yeast have identified more than 40 vacuolar protein sorting (VPS) genes involved in vesicle transport to vacuoles This gene encodes the human homolog of yeast class C Vps16 protein The mammalian class C Vps proteins are predominantly associated with late endosomes:lysosomes, and like their yeast counterparts, may mediate vesicle trafficking steps in the endosome:lysosome pathway Two transcript variants encoding different isoforms have been found for this gene

Products Images:



Western blot analysis of lysates from DU145 cells, primary antibody was diluted at 1:1000, 4° over night