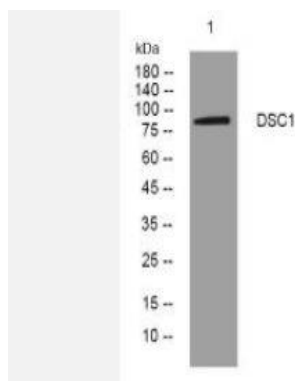


## DSC1 rabbit pAb

<b>Catalog No.</b>	IPB12558
<b>Reactivity</b>	Human; Mouse;
<b>Applications</b>	WB
<b>Dilution</b>	WB: 1:500-2000
<b>Gene Name</b>	DSC1 CDHF1
<b>Protein Name</b>	DSC1
<b>Human Gene Id</b>	1823
<b>Swiss-Prot</b>	Q08554
<b>Formulation</b>	Liquid in PBS containing 50% glycerol, 05% BSA and 002% sodium azide
<b>Source</b>	Rabbit
<b>Purification</b>	The antibody was affinity-purified from rabbit serum by affinity-chromatography using specific immunogen
<b>Concentration</b>	1 mg/ml
<b>Storage&amp;Stability</b>	-20°C/1 year
<b>Subcellular Location</b>	Cell membrane; Single-pass type I membrane protein Cell junction, desmosome
<b>MW</b>	98340
<b>Background</b>	The protein encoded by this gene is a calcium-dependent glycoprotein that is a member of the desmocollin subfamily of the cadherin superfamily These desmosomal family members, along with the desmogleins, are found primarily in epithelial cells where they constitute the adhesive proteins of the desmosome cell-cell junction and are required for cell adhesion and desmosome formation A subtype of IgA pemphigus, a life-threatening autoimmune disease, is characterized by the presence of autoantibodies that target the encoded protein The desmosomal family members are arranged in two clusters on chromosome 18 Alternative splicing of this gene results in multiple transcript variants At least one of these variants encodes a preproprotein that is proteolytically processed to generate the mature protein

### Products Images:



Western blot analysis of lysates from 293T cells, primary antibody was diluted at 1:1000, 4° over night