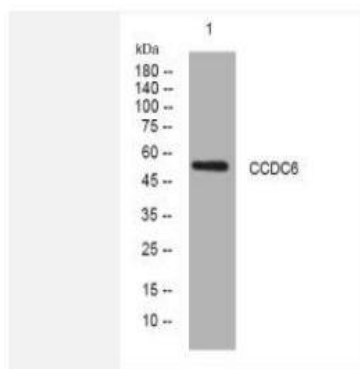


## CCDC6 rabbit pAb

<b>Catalog No.</b>	IPB12292
<b>Reactivity</b>	Human; Mouse;
<b>Applications</b>	WB
<b>Dilution</b>	WB: 1:500-2000
<b>Gene Name</b>	CCDC6 D10S170 TST1
<b>Protein Name</b>	CCDC6
<b>Human Gene Id</b>	8030
<b>Swiss-Prot</b>	Q16204
<b>Formulation</b>	Liquid in PBS containing 50% glycerol, 05% BSA and 002% sodium azide
<b>Source</b>	Rabbit
<b>Purification</b>	The antibody was affinity-purified from rabbit serum by affinity-chromatography using specific immunogen
<b>Concentration</b>	1 mg/ml
<b>Storage&amp;Stability</b>	-20°C/1 year
<b>Subcellular Location</b>	Cytoplasm Cytoplasm, cytoskeleton May be a cytoskeletal protein
<b>MW</b>	52140
<b>Background</b>	This gene encodes a coiled-coil domain-containing protein The encoded protein is ubiquitously expressed and may function as a tumor suppressor A chromosomal rearrangement resulting in the expression of a fusion gene containing a portion of this gene and the intracellular kinase-encoding domain of the ret proto-oncogene is the cause of thyroid papillary carcinoma

### Products Images:



Western blot analysis of lysates from Hela cells, primary antibody was diluted at 1:1000, 4° over night