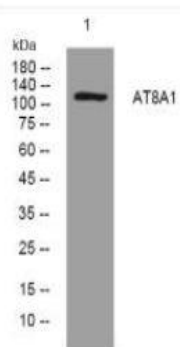


AT8A1 rabbit pAb

Catalog No.	IPB12176
Reactivity	Human; Mouse;
Applications	WB
Dilution	WB: 1:500-2000
Gene Name	ATP8A1 ATP1A
Protein Name	AT8A1
Human Gene Id	10396
Swiss-Prot	Q9Y2Q0
Formulation	Liquid in PBS containing 50% glycerol, 05% BSA and 002% sodium azide
Source	Rabbit
Purification	The antibody was affinity-purified from rabbit serum by affinity-chromatography using specific immunogen
Concentration	1 mg/ml
Storage&Stability	-20°C/1 year
Subcellular Location	Cytoplasmic vesicle, secretory vesicle, chromaffin granule membrane; Multi-pass membrane protein Cytoplasmic granule Cell membrane Endoplasmic reticulum Golgi apparatus Exit from the endoplasmic reticulum requires the presence of TMEM30A, but not TMEM30B In the presence of TMEM30A, predominantly located in cytoplasmic punctate structures and localizes to the plasma membrane Localizes to plasma membranes of red blood cells (By similarity)
MW	128040
Background	The P-type adenosinetriphosphatases (P-type ATPases) are a family of proteins which use the free energy of ATP hydrolysis to drive uphill transport of ions across membranes Several subfamilies of P-type ATPases have been identified One subfamily catalyzes transport of heavy metal ions Another subfamily transports non-heavy metal ions (NMHI) The protein encoded by this gene is a member of the third subfamily of P-type ATPases and acts to transport amphipaths, such as phosphatidylserine Two transcript variants encoding different isoforms have been found for this gene

Products Images:



Western blot analysis of lysates from 293T cells, primary antibody was diluted at 1:1000, 4° over night