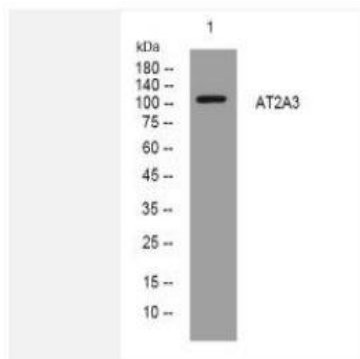


AT2A3 rabbit pAb

| | |
|------------------------------|--|
| Catalog No. | IPB12173 |
| Reactivity | Human; Mouse; Rat |
| Applications | WB |
| Dilution | WB: 1:500-2000 |
| Gene Name | ATP2A3 |
| Protein Name | AT2A3 |
| Human Gene Id | 489 |
| Swiss-Prot | Q93084 |
| Formulation | Liquid in PBS containing 50% glycerol, 05% BSA and 002% sodium azide |
| Source | Rabbit |
| Purification | The antibody was affinity-purified from rabbit serum by affinity-chromatography using specific immunogen |
| Concentration | 1 mg/ml |
| Storage&Stability | -20°C/1 year |
| Subcellular Location | Nucleus membrane; Multi-pass membrane protein Endoplasmic reticulum membrane; Multi-pass membrane protein Sarcoplasmic reticulum membrane; Multi-pass membrane protein |
| MW | 114730 |
| Background | This gene encodes one of the SERCA Ca(2+)-ATPases, which are intracellular pumps located in the sarcoplasmic or endoplasmic reticula of muscle cells This enzyme catalyzes the hydrolysis of ATP coupled with the translocation of calcium from the cytosol to the sarcoplasmic reticulum lumen, and is involved in calcium sequestration associated with muscular excitation and contraction Alternative splicing results in multiple transcript variants encoding different isoforms |

Products Images:



Western blot analysis of lysates from HuvEc cells, primary antibody was diluted at 1:1000, 4° over night