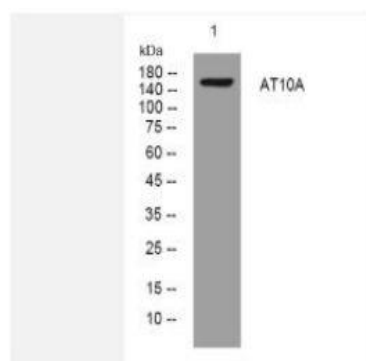


AT10A rabbit pAb

Catalog No.	IPB12171
Reactivity	Human; Mouse;
Applications	WB
Dilution	WB: 1:500-2000
Gene Name	ATP10A ATP10C ATPVA ATPVC KIAA0566
Protein Name	AT10A
Human Gene Id	57194
Swiss-Prot	O60312
Formulation	Liquid in PBS containing 50% glycerol, 05% BSA and 002% sodium azide
Source	Rabbit
Purification	The antibody was affinity-purified from rabbit serum by affinity-chromatography using specific immunogen
Concentration	1 mg/ml
Storage&Stability	-20°C/1 year
Subcellular Location	Cell membrane; Multi-pass membrane protein Endoplasmic reticulum membrane Exit from the endoplasmic reticulum requires the presence of TMEM30A, but not that of TMEM30B
MW	164890
Background	The protein encoded by this gene belongs to the family of P-type cation transport ATPases, and to the subfamily of aminophospholipid-transporting ATPases The aminophospholipid translocases transport phosphatidylserine and phosphatidylethanolamine from one side of a bilayer to another This gene is maternally expressed It maps within the most common interval of deletion responsible for Angelman syndrome, also known as 'happy puppet syndrome'

Products Images:



Western blot analysis of lysates from PC-12 cells, primary antibody was diluted at 1:1000, 4° over night