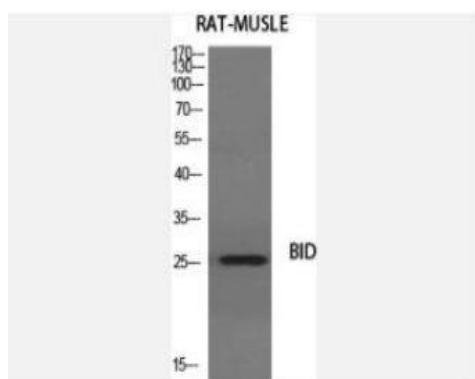


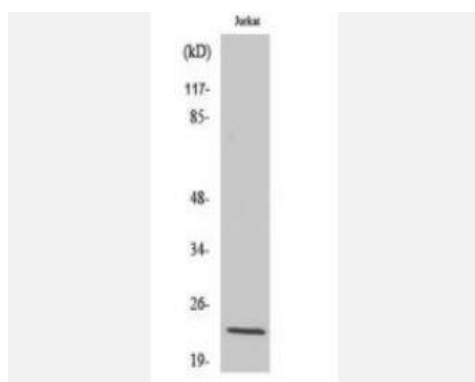
## BID Polyclonal Antibody

|                              |   |
|------------------------------|---|
| <b>Catalog No.</b>           | IPB0344   |
| <b>Reactivity</b>            | Human; Mouse;   |
| <b>Applications</b>          | WB; IHC-p; ELISA  |
| <b>Dilution</b>              | WB: 1:500-1:2000    IHC: 1:50-1:200    ELISA: 1:10000   |
| <b>Gene Name</b>             | BID   |
| <b>Protein Name</b>          | BH3-interacting domain death agonist  |
| <b>Human Gene Id</b>         | 637   |
| <b>Swiss-Prot</b>            | P55957  |
| <b>Formulation</b>           | Liquid in PBS containing 50% glycerol, 05% BSA and 002% sodium azide  |
| <b>Source</b>                | Rabbit  |
| <b>Purification</b>          | The antibody was affinity-purified from rabbit antiserum by affinity-chromatography using epitope-specific immunogen  |
| <b>Concentration</b>         | 1 mg/ml   |
| <b>Storage&amp;Stability</b> | -20°C/1 year  |
| <b>Subcellular Location</b>  | Cytoplasm Mitochondrion membrane Mitochondrion outer membrane When uncleaved, it is predominantly cytoplasmic [BH3-interacting domain death agonist p15]: Mitochondrion membrane Translocates to mitochondria as an integral membrane protein [BH3-interacting domain death agonist p13]: Mitochondrion membrane Associated with the mitochondrial membrane [Isoform 1]: Cytoplasm [Isoform 3]: Cytoplasm [Isoform 2]: Mitochondrion membrane A significant proportion of isoform 2 localizes to mitochondria, it may be cleaved constitutively |
| <b>MW</b>                    | 21995   |
| <b>Background</b>            | This gene encodes a death agonist that heterodimerizes with either agonist BAX or antagonist BCL2 The encoded protein is a member of the BCL-2 family of cell death regulators It is a mediator of mitochondrial damage induced by caspase-8 (CASP8); CASP8 cleaves this encoded protein, and the COOH-terminal part translocates to mitochondria where it triggers cytochrome c release Multiple alternatively spliced transcript variants have been found, but the full-length nature of some variants has not been defined                   |

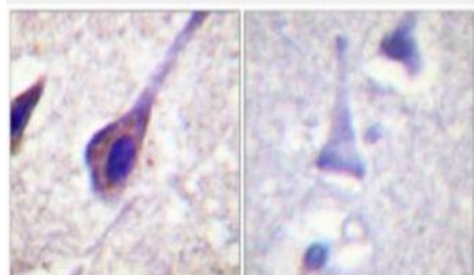
### Products Images:



Western Blot analysis of various cells using BID Polyclonal Antibody diluted at 1:1000



Western Blot analysis of Jurkat cells using BID Polyclonal Antibody diluted at 1:1000



Immunohistochemistry analysis of paraffin-embedded human brain, using BID Antibody. The picture on the right is blocked with the synthesized peptide.