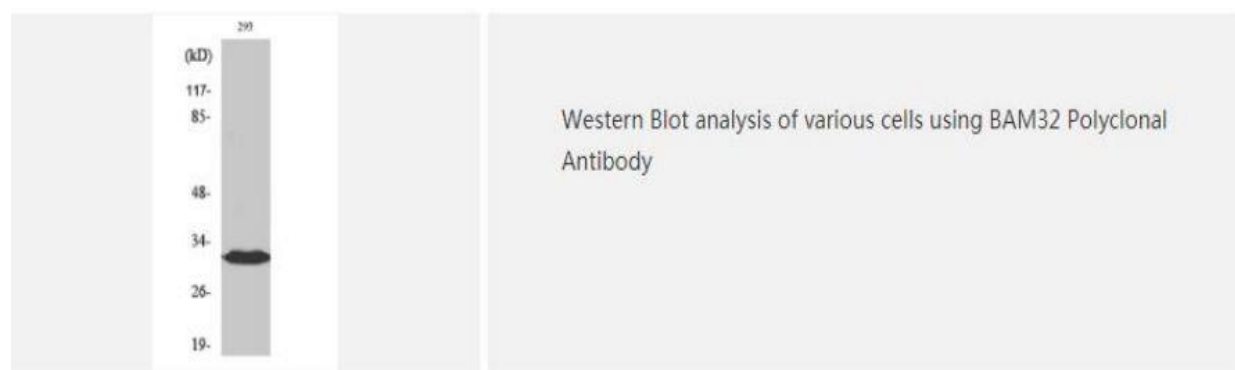
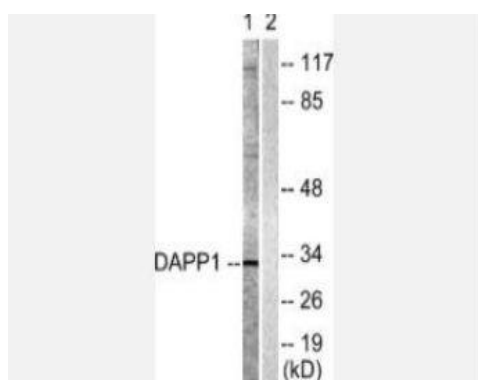


## BAM32 Polyclonal Antibody

<b>Catalog No.</b>	IPB0339
<b>Reactivity</b>	Human; Mouse;
<b>Applications</b>	WB; IHC-p; ELISA
<b>Dilution</b>	WB: 1:500-1:2000    IHC: 1:50-1:200    ELISA: 1:10000
<b>Gene Name</b>	DAPPI
<b>Protein Name</b>	Dual adapter for phosphotyrosine and 3-phosphotyrosine and 3-phosphoinositide
<b>Human Gene Id</b>	27071
<b>Swiss-Prot</b>	Q9UN19
<b>Formulation</b>	Liquid in PBS containing 50% glycerol, 05% BSA and 002% sodium azide
<b>Source</b>	Rabbit
<b>Purification</b>	The antibody was affinity-purified from rabbit antiserum by affinity-chromatography using epitope-specific immunogen
<b>Concentration</b>	1 mg/ml
<b>Storage&amp;Stability</b>	-20°C/1 year
<b>Subcellular Location</b>	Cytoplasm Membrane; Peripheral membrane protein Membrane-associated after cell stimulation leading to its translocation
<b>MW</b>	32194
<b>Background</b>	May act as a B-cell-associated adapter that regulates B-cell antigen receptor (BCR)-signaling downstream of PI3K,induction: Upon B-cell activation,PTM: Phosphorylated on tyrosine residues,similarity: Contains 1 PH domain,similarity: Contains 1 SH2 domain,subcellular location: Membrane-associated after cell stimulation leading to its translocation,subunit: Interacts with PtdIns(3,4,5)P3 and PLCG2 In vitro, interacts with PtdIns(3,4)P2,tissue specificity: Highly expressed in placenta and lung, followed by brain, heart, kidney, liver, pancreas and skeletal muscle Expressed by B-lymphocytes, but not T-lymphocytes or nonhematopoietic cells

### Products Images:





Western blot analysis of lysates from 293 cells, treated with Insulin 0.01U/ml 2', using DAPP1 Antibody. The lane on the right is blocked with the synthesized peptide.



Immunohistochemical analysis of paraffin-embedded human tonsil. 1, Tris-EDTA, pH 9.0 was used for antigen retrieval. 2 Antibody was diluted at 1:200 (4° overnight). 3, Secondary antibody was diluted at 1:200 (room temperature, 45min).