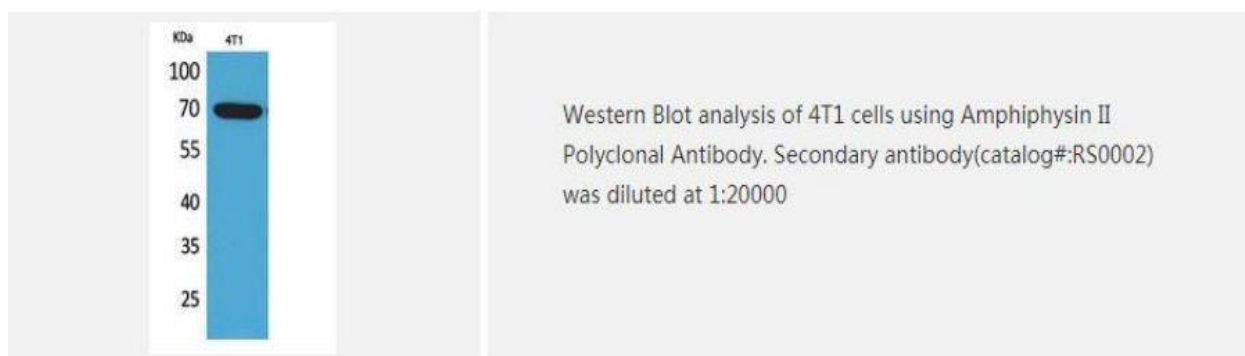
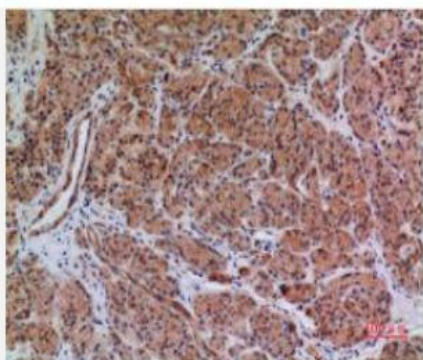


Amphiphysin II Polyclonal Antibody

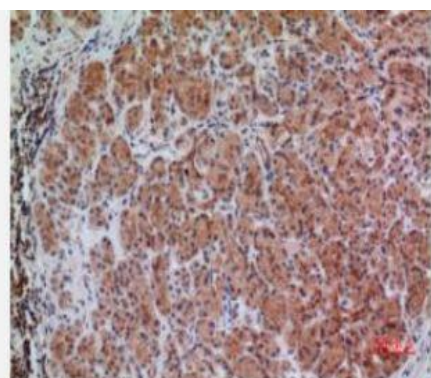
Catalog No.	IPB0323
Reactivity	Human; Mouse; Rat
Applications	WB; IHC-p; ELISA
Dilution	WB: 1:500-1:2000 IHC-p: 1:100-1:200 ELISA: 1:20000
Gene Name	BIN1
Protein Name	Myc box-dependent-interacting protein 1
Human Gene Id	274
Swiss-Prot	O00499
Formulation	Liquid in PBS containing 50% glycerol, 05% BSA and 002% sodium azide
Source	Rabbit
Purification	The antibody was affinity-purified from rabbit antiserum by affinity-chromatography using epitope-specific immunogen
Concentration	1 mg/ml
Storage&Stability	-20°C/1 year
Subcellular Location	[Isoform BIN1]: Nucleus Cytoplasm Endosome Cell membrane, sarcolemma, T-tubule [Isoform IIA]: Cytoplasm
MW	64699
Background	This gene encodes several isoforms of a nucleocytoplasmic adaptor protein, one of which was initially identified as a MYC-interacting protein with features of a tumor suppressor Isoforms that are expressed in the central nervous system may be involved in synaptic vesicle endocytosis and may interact with dynamin, synaptojanin, endophilin, and clathrin Isoforms that are expressed in muscle and ubiquitously expressed isoforms localize to the cytoplasm and nucleus and activate a caspase-independent apoptotic process Studies in mouse suggest that this gene plays an important role in cardiac muscle development Alternate splicing of the gene results in several transcript variants encoding different isoforms Aberrant splice variants expressed in tumor cell lines have also been described

Products Images:

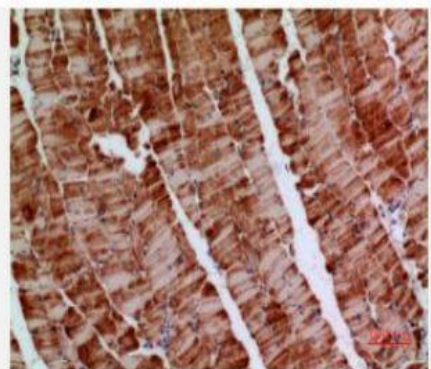




Immunohistochemical analysis of paraffin-embedded human-pancreas, antibody was diluted at 1:100



Immunohistochemical analysis of paraffin-embedded human-pancreas, antibody was diluted at 1:100



Immunohistochemical analysis of paraffin-embedded mouse-muscle, antibody was diluted at 1:100



Western blot analysis of lysate from 4T1 cells, using BIN1 Antibody.