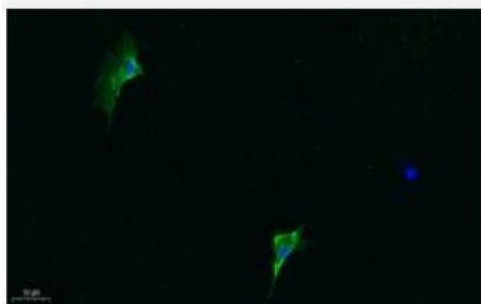


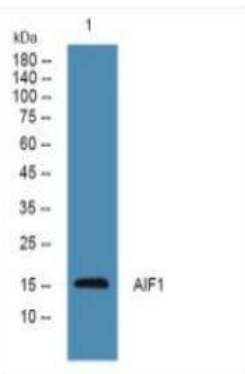
AIF1 Polyclonal Antibody

Catalog No.	IPB0320
Reactivity	Human; Mouse; Rat
Applications	WB; IF/ICC; ELISA
Dilution	WB: 1:500-1:2000 ELISA: 1:5000 IF: 1:50-1:200
Gene Name	AIF1 G1 IBA1
Protein Name	Allograft inflammatory factor 1 (AIF-1) (Ionized calcium-binding adapter molecule 1) (Protein G1)
Human Gene Id	199
Swiss-Prot	P55008
Formulation	Liquid in PBS containing 50% glycerol, and 002% sodium azide
Source	Rabbit
Purification	The antibody was affinity-purified from rabbit antiserum by affinity-chromatography using epitope-specific immunogen
Concentration	1 mg/ml
Storage&Stability	-20°C/1 year
Subcellular Location	Cytoplasm, cytoskeleton Cell projection, ruffle membrane; Peripheral membrane protein; Cytoplasmic side Cell projection, phagocytic cup Associated with the actin cytoskeleton at membrane ruffles and at sites of phagocytosis
MW	-
Background	This gene encodes a protein that binds actin and calcium This gene is induced by cytokines and interferon and may promote macrophage activation and growth of vascular smooth muscle cells and T-lymphocytes Polymorphisms in this gene may be associated with systemic sclerosis Alternative splicing results in multiple transcript variants, but the full-length and coding nature of some of these variants is not certain

Products Images:



Immunofluorescence analysis of A549. 1,primary Antibody was diluted at 1:200(4°C overnight). 2, Goat Anti Rabbit IgG (H&L) - Alexa Fluor 488 Secondary antibody was diluted at 1:1000(room temperature, 50min).3, Picture B: DAPI(blue) 10min.



Western blot analysis of lysates from U2OS cells, primary antibody was diluted at 1:1000, 4° over night