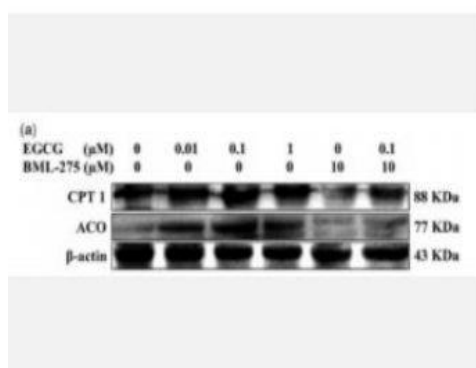


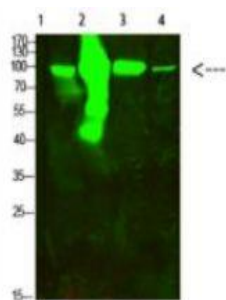
ACO2 Polyclonal Antibody

Catalog No.	IPB0318
Reactivity	Human; Mouse; Rat
Applications	WB; ELISA
Dilution	WB: 1:500-1:2000 ELISA: 1:5000
Gene Name	ACO2
Protein Name	ACO2
Human Gene Id	50
Swiss-Prot	Q99798
Formulation	Liquid in PBS containing 50% glycerol, 05% BSA and 002% sodium azide
Source	Rabbit
Purification	The antibody was affinity-purified from rabbit antiserum by affinity-chromatography using epitope-specific immunogen
Concentration	1 mg/ml
Storage&Stability	-20°C/1 year
Subcellular Location	Mitochondrion
MW	-
Background	The protein encoded by this gene belongs to the aconitase:IPM isomerase family. It is an enzyme that catalyzes the interconversion of citrate to isocitrate via cis-aconitate in the second step of the TCA cycle. This protein is encoded in the nucleus and functions in the mitochondrion. It was found to be one of the mitochondrial matrix proteins that are preferentially degraded by the serine protease 15 (PRSS15), also known as Lon protease, after oxidative modification.

Products Images:



Ding, Hongyan, et al. "Epigallocatechin-3-gallate activates the AMP-activated protein kinase signaling pathway to reduce lipid accumulation in canine hepatocytes." *Journal of Cellular Physiology* 236.1 (2021): 405-416.



Western Blot analysis of 1,mouse-kidney 2,mouse-heart 3,3T3 4,Hela cells using primary antibody diluted at 1:500(4°C overnight). Secondary antibody:Goat Anti-rabbit IgG IRDye 800(diluted at 1:5000, 25°C, 1 hour)