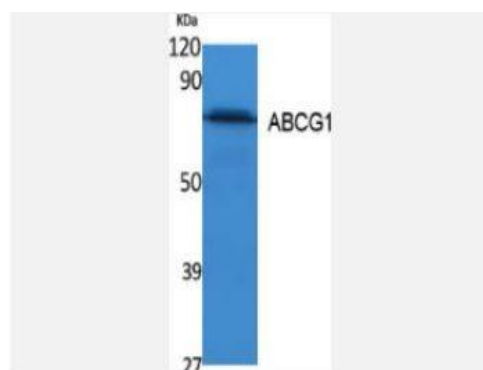


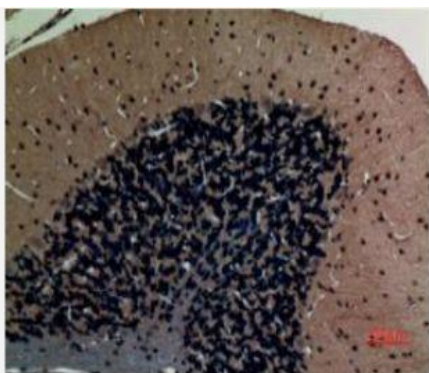
ABCG1 Polyclonal Antibody

Catalog No.	IPB0313
Reactivity	Human; Mouse; Rat
Applications	WB; IHC-p; ELISA
Dilution	WB: 1:500-1:2000 IHC-p: 1:100-1:200 ELISA: 1:10000
Gene Name	ABCG1
Protein Name	ATP-binding cassette sub-family G member 1
Human Gene Id	9619
Swiss-Prot	P45844
Formulation	Liquid in PBS containing 50% glycerol, 05% BSA and 002% sodium azide
Source	Rabbit
Purification	The antibody was affinity-purified from rabbit antiserum by affinity-chromatography using epitope-specific immunogen
Concentration	1 mg/ml
Storage&Stability	-20°C/1 year
Subcellular Location	Endoplasmic reticulum membrane; Multi-pass membrane protein Golgi apparatus membrane; Multi-pass membrane protein Cell membrane Predominantly localized in the intracellular compartments mainly associated with the endoplasmic reticulum (ER) and Golgi membranes
MW	75592
Background	The protein encoded by this gene is a member of the superfamily of ATP-binding cassette (ABC) transporters ABC proteins transport various molecules across extra- and intra-cellular membranes ABC genes are divided into seven distinct subfamilies (ABC1, MDR:TAP, MRP, ALD, OABP, GCN20, White) This protein is a member of the White subfamily It is involved in macrophage cholesterol and phospholipids transport, and may regulate cellular lipid homeostasis in other cell types Six alternative splice variants have been identified

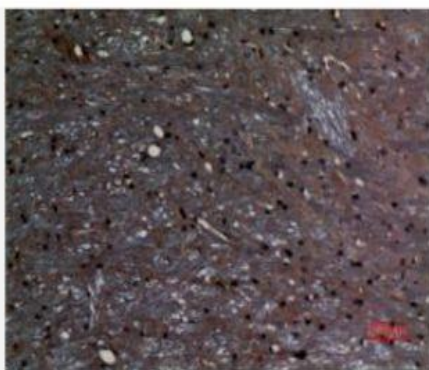
Products Images:



Western Blot analysis of extracts from K562 cells, using ABCG1 Polyclonal Antibody. Secondary antibody(catalog#:RS0002) was diluted at 1:20000



Immunohistochemical analysis of paraffin-embedded rat-brain, antibody was diluted at 1:100



Immunohistochemical analysis of paraffin-embedded rat-brain, antibody was diluted at 1:100