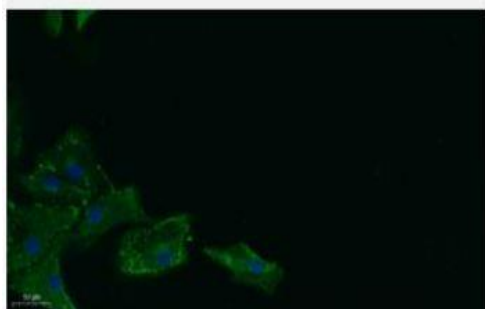


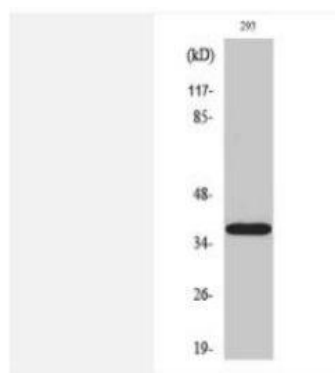
17 β -HSD11 Polyclonal Antibody

Catalog No.	IPB0310
Reactivity	Human; Mouse; Rat
Applications	WB; IF/ICC; ELISA
Dilution	WB: 1:500-1:2000 ELISA: 1:5000 IF: 1:50-1:200
Gene Name	HSD17B11
Protein Name	Estradiol 17-beta-dehydrogenase 11
Human Gene Id	51170
Swiss-Prot	Q8NBQ5
Formulation	Liquid in PBS containing 50% glycerol, 05% BSA and 002% sodium azide
Source	Rabbit
Purification	The antibody was affinity-purified from rabbit antiserum by affinity-chromatography using epitope-specific immunogen
Concentration	1 mg/ml
Storage&Stability	-20°C/1 year
Subcellular Location	Endoplasmic reticulum Lipid droplet Redistributed from the endoplasmic reticulum to lipids droplets in the cell upon induction of lipids droplet formation
MW	32964
Background	Short-chain alcohol dehydrogenases, such as HSD17B11, metabolize secondary alcohols and ketones (Brereton et al, 2001 [PubMed 11165019])

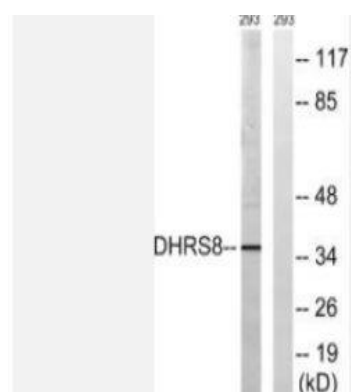
Products Images:



Immunofluorescence analysis of A549. 1,primary Antibody was diluted at 1:200(4°C overnight). 2, Goat Anti Rabbit IgG (H&L) - Alexa Fluor 488 Secondary antibody was diluted at 1:1000(room temperature, 50min).3, Picture B: DAPI(blue) 10min.



Western Blot analysis of various cells using 17β-HSD11 Polyclonal Antibody



Western blot analysis of lysates from 293 cells, using DHRS8 Antibody. The lane on the right is blocked with the synthesized peptide.