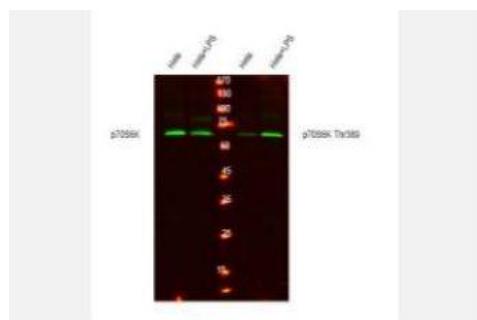


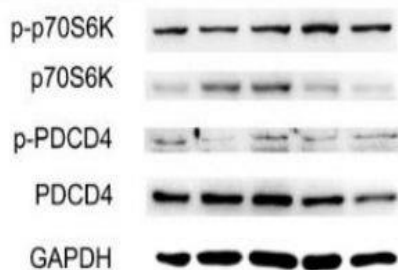
p70 S6 kinase α Polyclonal Antibody

Catalog No.	IPB0305
Reactivity	Human; Mouse; Rat
Applications	WB; IHC-p; IF/ICC; ELISA
Dilution	WB: 1:500-1:2000 IHC: 1:50-1:200 IF: 1:50-1:200 ELISA: 1:20000
Gene Name	RPS6KB1
Protein Name	Ribosomal protein S6 kinase beta-1
Human Gene Id	6198
Swiss-Prot	P23443
Formulation	Liquid in PBS containing 50% glycerol, 05% BSA and 002% sodium azide
Source	Rabbit
Purification	The antibody was affinity-purified from rabbit antiserum by affinity-chromatography using epitope-specific immunogen
Concentration	1 mg/ml
Storage&Stability	-20°C/1 year
Subcellular Location	Cell junction, synapse, synaptosome Mitochondrion outer membrane Mitochondrion Colocalizes with URI1 at mitochondrion [Isoform Alpha I]: Nucleus Cytoplasm [Isoform Alpha II]: Cytoplasm
MW	59140
Background	This gene encodes a member of the ribosomal S6 kinase family of serine:threonine kinases The encoded protein responds to mTOR (mammalian target of rapamycin) signaling to promote protein synthesis, cell growth, and cell proliferation Activity of this gene has been associated with human cancer Alternatively spliced transcript variants have been observed The use of alternative translation start sites results in isoforms with longer or shorter N-termini which may differ in their subcellular localizations There are two pseudogenes for this gene on chromosome 17

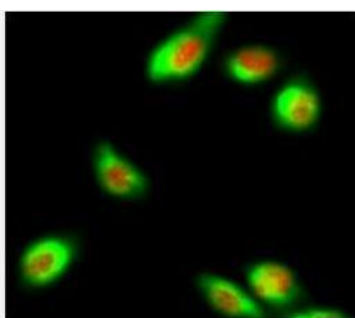
Products Images:



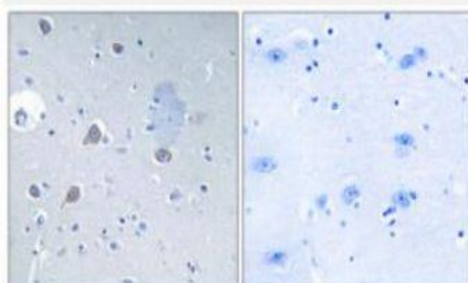
Western blot analysis of lysates from HeLa cells, treated with LPS 100ng/ml 30', using total P70 S6 Kinase Antibody(catalog: YT3555) and P70 S6 Kinase (phospho T389) antibody(catalog: YP1427). (Green) primary antibody was diluted at 1:1000, 4° over night, secondary antibody(cat:RS23920) was diluted at 1:10000, 37° 1 hour.



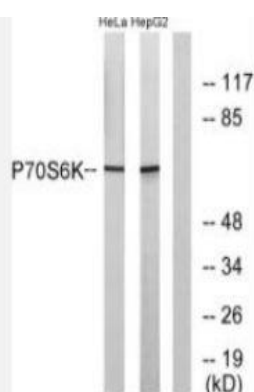
Ge, Cheng, et al. "Atheroprotective Pulsatile Flow Induces Ubiquitin-Proteasome-Mediated Degradation of Programmed Cell Death 4 in Endothelial Cells." PloS one 9.3 (2014): e91564.



Immunofluorescence analysis of HeLa cell. 1, p70 S6 kinase α Polyclonal Antibody (red) was diluted at 1:200 (4° overnight). CK7 Monoclonal Antibody (12D7) (green) was diluted at 1:200 (4° overnight). 2, Goat Anti Rabbit Alexa Fluor 594 Catalog: RS3611 was diluted at 1:1000 (room temperature, 50min). Goat Anti Mouse Alexa Fluor 488 Catalog: RS3208 was diluted at 1:1000 (room temperature, 50min).



Immunohistochemistry analysis of paraffin-embedded human brain tissue, using p70 S6 Kinase Antibody. The picture on the right is blocked with the synthesized peptide.



Western blot analysis of lysates from HeLa/HepG2, using p70 S6 Kinase Antibody. The lane on the right is blocked with the synthesized peptide.