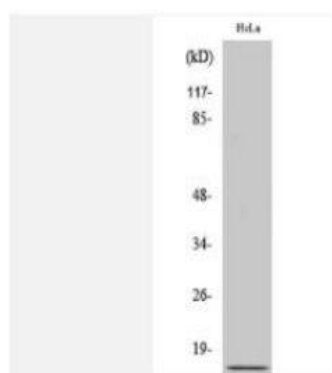


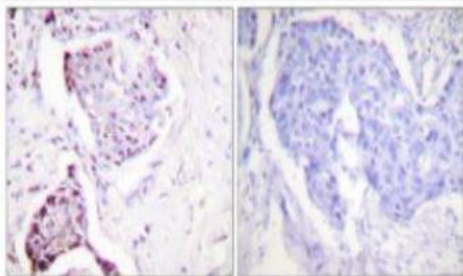
Ub Polyclonal Antibody

Catalog No.	IPB0301
Reactivity	Human; Mouse; Rat
Applications	WB; IHC-p; ELISA
Dilution	WB: 1:500-1:2000 IHC: 1:50-1:200 ELISA: 1:20000
Gene Name	UBA52;RPS27A;UBB;UBC
Protein Name	Ubiquitin
Human Gene Id	7311
Swiss-Prot	P0CG47:P0CG48:P62979:P62987
Formulation	Liquid in PBS containing 50% glycerol, 05% BSA and 002% sodium azide
Source	Rabbit
Purification	The antibody was affinity-purified from rabbit antiserum by affinity-chromatography using epitope-specific immunogen
Concentration	1 mg/ml
Storage&Stability	-20°C/1 year
Subcellular Location	[Ubiquitin]: Cytoplasm Nucleus Mitochondrion outer membrane; Peripheral membrane protein
MW	17965
Background	This gene encodes ubiquitin, one of the most conserved proteins known Ubiquitin has a major role in targeting cellular proteins for degradation by the 26S proteasome It is also involved in the maintenance of chromatin structure, the regulation of gene expression, and the stress response Ubiquitin is synthesized as a precursor protein consisting of either polyubiquitin chains or a single ubiquitin moiety fused to an unrelated protein This gene consists of three direct repeats of the ubiquitin coding sequence with no spacer sequence Consequently, the protein is expressed as a polyubiquitin precursor with a final amino acid after the last repeat An aberrant form of this protein has been detected in patients with Alzheimer's disease and Down syndrome Pseudogenes of this gene are located on chromosomes 1, 2, 13, and 17 Alternative splicing results in multiple transcript variants

Products Images:



Western Blot analysis of various cells using Ub Polyclonal Antibody. Secondary antibody(catalog#:RS0002) was diluted at 1:20000



Immunohistochemistry analysis of paraffin-embedded human breast carcinoma tissue, using Ubiquitin Antibody. The picture on the right is blocked with the synthesized peptide.